

2018

Daewoo Development Co., Ltd. Engineering & Construction IR

Daewoo Development Co., Ltd. Engineering & Construction IR



11th floor, Wise Tower, 17, Sejong-daero, Jung-gu, Seoul
Tel : 02)6244-7000

iaan_www.iaanapt.com
Brioche Dorée_www.briochedoree.co.kr

<http://www.dwconstruction.com>

Brand Story

안이 다른 아파트



Our Eco-friendly Apartments Brand, "iaan"

Stands for the well-being life where the humanity becomes one with the nature. It's truly different inside.



Where the best meets the best, "Exordium"

The Luxury Life - This is the value of iaan EXORDIUM



French Bakery Café

Europe's No. 1 bakery brand, "Brioche Dorée,"

is the french traditional bakery brand of the top dining company, Groupe LE DUFF, of France. The brand, which is loved by the French people and has more than 500 shops worldwide, is the most representative bakery brand in France. This top brand of Europe was launched in Korea by Daewoo Development Co., Ltd. Engineering & Construction dining brand in 2013.

Dynamic Works

We challenge with passion across the entire world.

The challenging spirit of Daewoo Development and commitment to flawless qualities allow us to use the world's class construction technology.

Developing Worth

We always create new values and possibilities.

We build a new country, a new economy, and a new world. Daewoo Development builds the future of South Korea with the spirit of future-oriented, new leader.

Different World

We make the brave new world.

Our strong sense of responsibility and the mindset of valuing the environment, we will build a beautiful South Korea through the harmony between the green environment and construction.

Daewoo
Development Co., Ltd.
Engineering & Construction

Contents

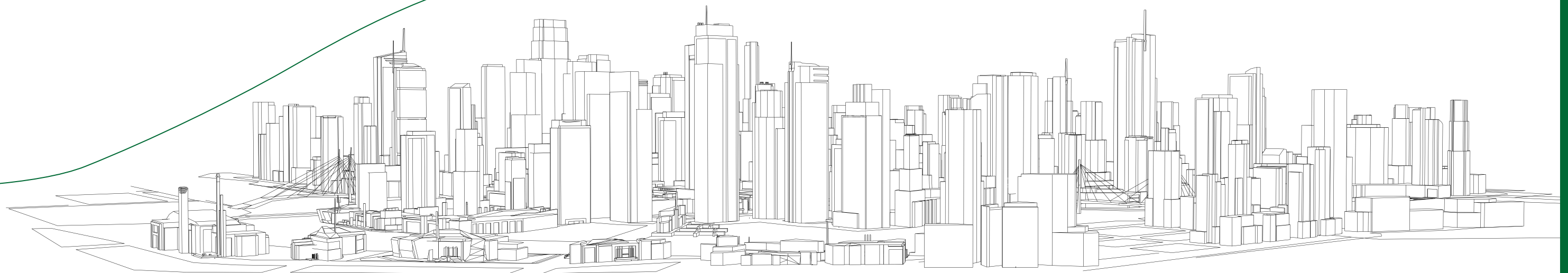
- 06 Performance Highlights 2017
- 10 CEO Message
- 12 Company Overview
 - Company Overview and History
 - Licenses and Awards
 - Company certificate attached, with training center and copyright registration certificates
 - Organization Chart, Vision
 - Our Brands
- 22 Financial Review & Outlook 2018
 - Operation Performance, Sales and Sales and Operating profit
 - Order Awarding Performance and Outstanding Orders Outlook 2018
- 24 Performance Highlights
 - Building Works
 - Civil Work & Environmental Plants
 - Completion Status by Categories (Public / Housing / Overseas Projects)
 - Food Services & Culture

TURN AROUND MANAGEMENT!

**Daewoo Development Co., Ltd.
Engineering & Construction
Put the customers' values and
futures as the first priority**

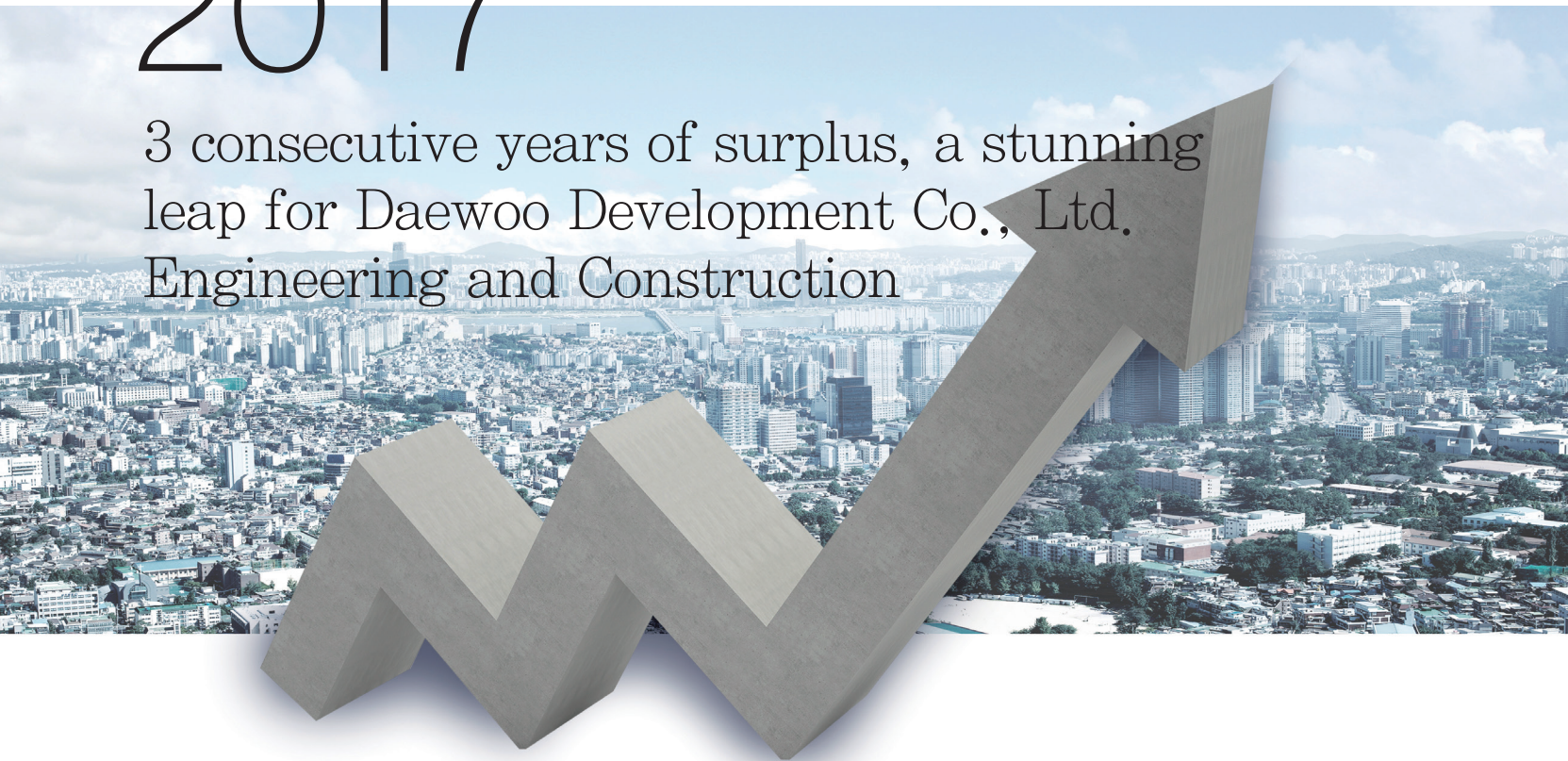
Daewoo Development Co., Ltd. Engineering & Construction running a right path in customer-oriented and transparent business management opens new paradigm on an architectural and dining culture in 21st century in line with a balance between humans, nature and technology.

**2017
Consecutive surplus since**



Performance Highlight 2017

3 consecutive years of surplus, a stunning leap for Daewoo Development Co., Ltd. Engineering and Construction



Daewoo Development Co., Ltd. Engineering and Construction (well known for its brand, iaan) has been growing rapidly for three consecutive years, earning a surplus.

Daewoo Development Co., Ltd. Engineering and Construction recorded sales of KRW 313.2 billion and an operating profit of KRW 16.5 billion, up 29.2% and 84.0% over the previous year, respectively. Net income also rose to KRW 25.1 billion, up from KRW 7.8 billion in the previous year. In particular, sales have reached their highest ever since the company was split from Daewoo Motor Sales Co., Ltd. The operating margin also climbed from 3.7% in 2016 to 5.3% in 2017, boosting financial soundness. In 2014, order receipts amounted to KRW 176.8 billion, but in 2015, when the company began turning a surplus, order receipts surged to KRW 334.6 billion. Steady performance in winning orders has been shown. For example, in 2016 the company earned KRW 474.6 billion and in 2017 KRW 410.6 billion. Business awarded in 2017 included housing projects in Pohang Hakjam District, Bucheon Samhyeop Townhouse, Donghae Cheonggok-dong and Hanam Gamylil; public works such as the Geomundo Port Maintenance Facility and Cheongju Bangseo Elementary School construction; and profitable real estate such as Yongin Shingal Officetel, a residential facility at Osan University Station. In 2018, orders are expected to rise to KRW 686.3 billion, far higher than this year. Orders, completed reconstruction and redevelopment projects, and regional housing association projects have contributed greatly to improving the company's earnings. In addition, orders for apartments for regional housing associations and public projects, as well as the successful completion of iaan Gwangju Cheomdan and iaan Gyeongsan Jinryang, have also contributed.

The power to overcome management crises is based on communication with employees.

- Rapid growth in the last three years... Record sales last year
- Actively winning orders for reconstruction and redevelopment projects; construction of apartments for regional housing associations will serve as a revenue driver
- Entering as a major player in the reconstruction of sizeable local markets and urban environment maintenance projects
- Strengthening overseas business by entering into the restaurant market in China with our first store in Guangzhou in this year.

Brand power and successful distribution/completion are major strengths for the company.

It is no exaggeration to say that Daewoo Development Co., Ltd. Engineering and Construction, which has been earning a surplus since 2015, was able to achieve success because of its flagship apartment brand, iaan. At one point, iaan was the number one brand choice among mid-sized construction companies. For this reason, iaan's brand value has been a great support for the company while trying to regain stability after its new start in December 2011. The company has also been performing well in terms of distribution. Currently, the Wonju Taejang area in Gangwon-do, Seosan Techno Valley in Chungcheongnam-do, and Eumsung Daeso-myeon in Chungcheongbuk-do represent a lot of interests. In particular, apartments for regional housing associations, which generally take a long time to develop from start to move-in, iaan Gyeongsan Jinryang and iaan Gwangju Cheomdan were successfully completed, with move-in happening in 2017. This once again demonstrates the power of Daewoo Development Co., Ltd. Engineering and Construction.

Daewoo Development Co., Ltd. Engineering and Construction has decided to expand its business not only among regional housing associations, which have represented a majority of its clients, but also into redevelopment and reconstruction, and public and private sectors. Especially for redevelopment and reconstruction projects, Daewoo plans to concentrate on profitability. In addition, the company plans to continue its profit surplus trend through omnidirectional order winning activities.

Rapid growth in the last three years... Record sales last year

On the other hand, an authentic French bakery cafe brand Brioche Doree, a new growth engine for Daewoo Development Co., Ltd. Engineering and Construction, has achieved 71% sales growth over 2016. In Korea it has expanded through continual shop opening in core areas such as Jongno, Apgujeong and Yeouido. In China, the company has intended to progress the business in earnest with the No. 1 store in Guangzhou.

Daewoo Development Co., Ltd. Engineering and Construction said, "Growth is accelerating due to improvement in company structure in terms of sales growth and financial improvement. We plan to establish mid- and long-term plans to further improve corporate value starting this year. Every employee will make an effort to help create sustainable growth, building a basis to survive as a company for 100 years."

Daewoo Development Co., Ltd. Engineering and Construction is expected to grow steadily with its aggressive order winning strategy, excellent manpower, and differentiated management know-how.

Daewoo Development Co., Ltd. Engineering and Construction in the press in 2017



Daewoo Development Co., Ltd. Engineering and Construction Co., Ltd. donated to the Global Young Business Manger Development Project.

Daewoo Development Co., Ltd. Engineering and Construction Co., Ltd. well-known through its iaan brand, has said at 7th it will sponsor scholarships for the Global Young Business Manager Project by joining with the Daewoo Global Management Research Association to help young professionals advance into the global market,also intending to address the labor shortage among companies acting overseas. At the donation ceremony, the two sides agreed to actively cooperate in future global advancement projects as well, and this donation will be used to fund a scholarship. The company also promised mutual exchange and support for business in various fields, starting with the ceremony. Chairman Sang-young Lee of Daewoo Development Co., Ltd. Engineering and Construction and Chairman Byeong-ju Jang of the Daewoo Global Management Research Association said, "We will strengthen national competitiveness, resolve unemployment problems, and help mid-sized companies and SMEs by enabling skilled professionals to advance overseas in a fiercely competitive society. In addition, the two organizations, which have the same roots, will cooperate meaningfully now and in the future." Daewoo Development Co., Ltd. Engineering and Construction is the construction part of the former Daewoo Group Daewoo Motor Sales Co., Ltd. It has accomplished 6,507.7 billion KRW in sales through public, private, and overseas projects, including 4,828 billion KRW from housing, and is expanding its business centered on regional housing associations, reconstruction, named upon iaan brand since 2012 revival. In addition, the company is also engaged in the restaurant franchise business through its authentic French bakery, Brioche Doree. The Daewoo Global Management Research Association is a non-profit organization established by Daewoo Group employees in 2009. It has over 4500 active members and over 30 overseas branches. Major business with which it is involved includes training global Young Business Managers (YBM), SME support projects, academic seminars, and operation of the World Academy of Management.

Daewoo Development Co., Ltd. Engineering and Construction Consortium submits a letter of intent to acquire Sambu Construction

Daewoo Development Co., Ltd. Engineering and Construction Co., Ltd. famous for its iaan brand, has formed a consortium to participate in the acquisition of Sambu Construction. Daewoo Development Co., Ltd. Engineering and Construction filed a letter of intent on the 18th and participated in takeover bidding. Daewoo Development Co., Ltd. Engineering and Construction will lead the takeover, and JS Asset Management Company, a financial investor, will join as a partner company. Daewoo Development Co., Ltd. Engineering and Construction, which has been steadily stabilizing its operations for the past two consecutive years, has been striving to strengthen its existing construction business through the iaan brand, to diversify, and to discover new business opportunities. It was reported to have jumped into the takeover to obtain more growth power while ensuring internal stability. A person connected to Daewoo Development Co., Ltd. Engineering and Construction explained the background for participating in the takeover by saying, "We will expand our portfolio from our existing construction-oriented business structure through joint advancement into civil engineering, plants, and overseas markets such as China through the Sambu M&A. In this way, we will secure business stability and increase the value of our enterprise over the long term."

Opening event to be held for Brioche Doree's Apgujeong Station branch with an autumn jazz concert

Jazz concerts will be held on the 18th and 19th on the terrace of Brioche Doree's Apgujeong Station branch, in which people can fully enjoy a taste of autumn of Paris. Brioche Doree has set up this jazz concert as part of the Apgujeong Station store's opening event, to be held on the 18th. A jazz band centered around Joe Van Rhijn, a jazz trumpet player, including apiano, guitar, and contrabass performers will perform three times on the 18th and 19th. Brioche Doree's jazz concert will be open to all shop visitors, so people can experience the concert along with Brioche Doree's authentic French croissants. Brioche Doree's Apgujeong Station branch is located on the 1st floor of the ISA Building (formerly Napoleon Confectionery) located at 51, 30-gil, Apgujeong-ro, Gangnam-gu, Seoul (Sinsa-dong). "We wanted French bakery lovers to have a chance to experience French culture as well as Brioche Doree's products," a Brioche Doree representative said, explaining the background behind this cultural performance. The shop's croissants, which can be enjoyed along with the jazz performance, are area representative items from Brioche Doree and have received the French government's certificate of origin (AOP), allowing people to experience a real taste of France.



Daewoo Development Co., Ltd. Engineering and Construction Performs volunteer activities motivated by love for a warm year-end.



At the end of the year, Daewoo Development Co., Ltd. Engineering and Construction carried out the "Blood Donation Service of Love" and "Volunteer Service for Briquette Sharing of Love" to convey warmth to their neighbors. On November 27th, Daewoo Development Co., Ltd. Engineering and Construction employees donated blood at the Daewoo Development Co., Ltd. Engineering and Construction Seoul Office and participated in life sharing activities. The event was meant to convey hope to patients suffering from blood loss. The certificates of donation will be delivered to neighbors in need. Daewoo Development Co., Ltd. Engineering and Construction employees also carried out volunteer activities for the "Briquette Sharing of Love" program. On the first day of this month, 1,500 briquettes were donated to the Incheon Briquette Bank, delivered directly. About 30 employees delivered these 1,500 briquettes to local residents around Sanggok Elementary School in Bupyeong-gu, Incheon, helping local residents spend a warm winter. The employees volunteered in the heat despite the harsh weather to help neighbors who would otherwise suffer through the cold winter.

Daewoo Development Co., Ltd. Engineering and Construction won an order for a housing reconstruction and maintenance project at Joongang Apartments at Cheongok-dong, Donghae-si.



Daewoo Development Co., Ltd. Engineering and Construction won a project to rebuild the Joongang Apartments in Cheongok-dong, Donghae-si, which is worth about 36 billion KRW. The Joongang Apartments in Cheongok-dong, Donghae-si, located at 788, Cheongok-dong, Donghae-si, Gangwon-do will be built to feature apartments and auxiliary facilities with a total floor area of 29,956.41 m². The complex consists of 2 underground levels, 15 floors above ground, and 5 buildings for a total of 241 units. The exclusive areas consist of 59m², 72m², and 84m², which are medium and small-sized pyeongs that receive high preference. The housing reconstruction and maintenance project was approved in April of this year and will be distributed in the second quarter of next year. The location features convenient transportation, is in good proximity to schools and is equipped with living convenience facilities. Donghae Expressway Donghae IC can be reached quickly and Route 7 is adjacent, so movement around the Yeongnam region and the metropolitan area is convenient. In addition, KTX, which connects Incheon International Airport to Gangneung, is scheduled to be extended to Donghae Station in 2018, making transportation even more convenient.

Daewoo Development Co., Ltd. Engineering and Construction concluded a business agreement for reconstruction on Samhyeop Townhouse in Bucheon-si, which will be Gyeonggi-do's first trust participation project.



Daewoo Development Co., Ltd. Engineering and Construction, famous for its iaan brand, conducted a business agreement ceremony on the 24th for Bucheon-si Samhyeop Townhouse, which will be the first trust participation type reconstruction project in Gyeonggi-do. The agreement ceremony was attended by Daewoo Development Co., Ltd. Engineering and Construction, Korea Land Trust, Bucheon City, and Samhyeop Townhouse representatives. The main content of the agreement is as follows: ▲ Support for permit processing and approval and consultation with related organizations, ▲ Rapid decision making and migration cooperation, ▲ Transparent association management and information disclosure, with prompt business promotion, ▲ Smooth business management, taking responsibility until completion to create a well-designed complex without defects, ▲ Utilizing materials and labor in the district to revitalize the economy and create jobs. The project involves the building of Samhyeop Townhouse and single-family houses in the area of 155-1, Wonmi-dong, Wonmi-gu, Bucheon-si, which will be transformed into a complex with two basement levels, 26 floors above ground and 226

housing units. Trust participation reconstruction was introduced with the amendment of the Urban and Housing Environment Improvement Act in March last year, allowing a trust company to take charge of implementation together with an association. Compared to general association reconstruction projects, there is less business risk and a project can be promoted promptly and stably. A person connected to Daewoo Development Co., Ltd. Engineering and Construction said, "We are very excited about participating in a new trust participation reconstruction project in Gyeonggi-do. We will do our best to complete a stable and rapid construction work based on our excellent technology and abundant construction experience."

Daewoo Development Co., Ltd. Engineering and Construction won a construction order for Lot No. 3 of the Hanam Gamyil A1 Block Apartments.



Daewoo Development Co., Ltd. Engineering and Construction, well known for its iaan brand, has signed a subcontract for construction of the Hanam Gamyil A1 Block Apartments (Lot No. 3), according to an order placed by the Korea Land and Housing Corporation (LH). The Hanam Gamyil A1 Block Apartments Construction Project (Lot No. 3) will have a total area of 81,886.75 m² in Gamyil-dong and the Gamyil-dong area in Hanam-si, Gyeonggi-do. It consists of 51 m²-59 m² apartments with exclusive areas, 18 to 27 floors above ground, 7 buildings, a total of 669 housing units and subsidiary welfare facilities. The contract amount is about 56,920.68 billion KRW, and the construction period is 857 days from the start date. Daewoo Development Co., Ltd. Engineering and Construction holds a 70% share of the construction amount. The LH iaan Apartments (800 housing units), which Daewoo Development Co., Ltd. Engineering and Construction built in Buldang-dong, Seobuk-gu, Cheonan-si, Chungnam, earned Daewoo selection as an excellent construction company for LH's residential facilities in 2016. A person connected to Daewoo Development Co., Ltd. Engineering and Construction said, "As a result of our steady competitiveness through public works and private apartment projects, Daewoo Development Co., Ltd. Engineering and Construction has been able to win orders for projects through the Comprehensive Review Bidding System," adding, "we will do our utmost to make masterpiece LH apartments in Hanam."



Daewoo Development Co., Ltd. Engineering and Construction won the order for the Pohang Hakjam 1 District Housing Redevelopment and Maintenance Project.

Daewoo Development Co., Ltd. Engineering and Construction, well known for its iaan brand, announced on February 20th that it has signed a contract for a housing redevelopment and maintenance project in the 1st district of Hakjam, Pohang-si, Gyeongsangbuk-do. This housing redevelopment and maintenance project will be carried out in 105-3, Hakjam-dong, Buk-gu, Pohang-si, Gyeongsangbuk-do. Apartments and neighborhood living facilities will occupy 26,419.90 m² (7,992.02 pyeong). The apartments will consist of 2 underground levels and 29 floors above ground, with 8 buildings for a total of 619 housing units and exclusive areas of 29m², 59m², 74m² and 84m². The contract amount is about 107.8 billion KRW. The project site offers good living conditions because it is in good proximity to schools, equipped with up-to-date living facilities, and has easy access to transportation. It is located close to Yanghak Elementary School and Yanghak Middle School, within walking distance, and is adjacent to Y-dong, which holds many private educational institutes. E-mart and Yanghak market are in the vicinity, and a large hospital is within 1km from the project site. Also, Route 7 can be conveniently reached, making it easy to access the city center, with Route 28 and Route 31 also in range. "We will do our utmost to win orders for redevelopment and reconstruction projects in excellent locations in order to expand our business portfolio," and "we will make masterpiece apartments that can satisfy residents," said a person connected to Daewoo Development Co., Ltd. Engineering and Construction. Meanwhile, Daewoo Development Co., Ltd. Engineering and Construction has been successfully implementing the iaan brand for regional housing association projects such as Gwangju Cheomdan, Gyeongsan Jinryang, and Wonju Tasejang. The company has also won redevelopment and reconstruction projects such as Daegu Metropolitan City's Seonjin Shinam District Housing Reconstruction and Maintenance Project, Dongdaegu District Urban Environmental Improvement Project, and Dongin 3-1 District Housing Redevelopment Maintenance Project. Daewoo is continuing to expand its business steadily. In addition, the company is also engaged in the restaurant business and has an affiliation with authentic French bakery cafe Brioche Doree.

iaan Gyeongsan Jinryang Apartments by Daewoo Development Co., Ltd. Engineering and Construction were the first regional housing association complex in Gyeongsan-si to succeed in reaching a move-in state.

iaan Gyeongsan Jinryang Apartments became the first regional housing association complex in Gyeongsan, Gyeongsangbuk-do, that succeeded in reaching a move-in state, set to open on the 13th of this month after receiving approval from an association establishment in June 2014. Daewoo Development Co., Ltd. Engineering and Construction has been attracting attention from the industry as it makes smooth business progress in collaboration with Gyeongsan area housing associations. The complex at hand was built to offer small and medium-sized apartments in the highly preferential area of Seonhwa-ri, Jinryang-eup, Gyeongsan-si, Gyeongsangbuk-do. It consists of 540 housing units, ranging from a basement level to 19 above-ground floors in 6 buildings, with exclusive areas of 59m², 74m² and 84m². Gyeongsan industrial complex is nearby, and the development plan for Jinryang Seonhwa City has been confirmed, so demand is abundant. Gyeongbu Expressway Gyeongsan IC is also near, with the Railroad Gyeongbu Line and Daegu Line easily accessible for excellent transportation options. Daewoo Development Co., Ltd. Engineering and Construction is the first company to successfully establish apartments for a regional housing association in the Gyeongsan area, and it will steadily lead the redevelopment and reconstruction projects currently underway in Daegu based on this success. In addition, the company's strategy is to secure brand recognition and strengthen its competitiveness in the Daegu and Gyeongbuk regions by winning orders for various projects. The company will also perform co-marketing with local companies for the purpose of revitalizing the local economy and rewarding apartment residents. The company will provide discount coupons for apartment residents by consulting with household appliance companies, furniture companies, gyms, etc. They will target services necessary when moving in and living so as to become a leading company in the region and offer convenience to apartment residents.

Opening of Gyeongnam's first Brioche Doree, the Geoje Norwegian Forest branch

Now you can enjoy an authentic French bakery in Geoje. Brioche Doree announced on the 9th that it will open a branch in Gyeongsangnam-do at the Yurim Norwegian Forest Residential Complex in Janggyeong-dong, Geoje. Brioche Doree's Norwegian Forest store will be the third branch in the franchise, after the Gwangju Sangmu and Mapo Hapjeong stores. The establishment of the Brioche Doree franchise has attracted a great deal of attention, especially in provincial cities. According to a representative, "We are more interested in establishing the Brioche Doree franchise in local cities with relatively strong consumption culture but relatively few options, rather than districts in Seoul and the surrounding vicinity with lots of dessert options."

CEO Message



At Daewoo Development Co., Ltd. Engineering and Construction we are endeavoring to secure high quality man-power and develop differentiated technologies in order to obtain superb competitiveness and technical advantages.

Greetings

I am the CEO of Daewoo Development Co., Ltd. Jason.J.HAN.

Since we started our business as Handok General Construction in 1995, we have been committed to introducing the best residential spaces to our clients, under the slogan, “iaan, apartments that are different inside.” 20 long years have passed, and we have come a long way establishing ourselves in the construction industry to fulfill this goal.

As we changed our name to “Daewoo Automobile Sales” and then to Daewoo Development Co., Ltd. Engineering and Construction we experienced many difficulties in the process of reorganizing our businesses. But, these bitter lessons of the past are now serving us as valuable lessons, and we are now trying to take a leap forward to become a company that is loved by our customers.

With iaan of our apartments brand, Exordium of the premium residential-commercial brand, and iaan Cube of Offistel brand and Myville of the urban life-style residency brand, as well as Brioche Dorée of the traditional French bakery and café brand, we will make the utmost efforts to be a more reliable and customer-oriented construction company. We will also make the best possible endeavors to maximize the profits for our shareholders and fulfill our social responsibilities in not only our construction businesses but also operations, retails, and other additional business activities.

We, Daewoo Development Co., Ltd. Engineering and Construction are committed to becoming a pillar of Korean residential culture with our efforts in training, R&D, communication, and social harmony, and we highly appreciate the support and affection extended to us.

Thank you.

Jason.J.HAN

CEO

A handwritten signature in black ink, appearing to read 'Jason J. Han', written in a cursive style.

Company Overview

After starting our construction business in 1995 and acquiring Handok General Construction Co., Ltd. in 1997, we have engaged in engineering and construction businesses for the civil work, construction, housings, plants, etc. as the Construction Business Division of Daewoo Automobile Sales Co., Ltd. In accordance with the revitalization plan for Daewoo Automobile Sales Co., Ltd. announced on December 19, 2011, we were spun off as Daewoo Development Co., Ltd. Engineering and Construction Notwithstanding our short history, our growth rate has rapidly grown, and we became one of the top 50 contractors in Korea in 2006 in terms of our construction capacity, as the first Grade Contractor. We continued to grow with eleven consecutive years of profit until 2009, as a sound and reliable construction company.

We have experience in public, private, residential, and overseas projects, covering roads, ports, tunnels, dams, and land reclamation and other social infrastructures, as well as housing, office, performance and cultural facilities, and research and educational facilities, and have been widely recognized for our construction capacity and technical capabilities. In 2003, our housing division launched its brand, iaan, a name that promises that our properties contain all the values the customers wish for inside their living spaces, and introduced the slogan, "Apartments that are different inside" to enhance our brand competitiveness as we engaged in differentiated marketing campaigns. In 2006, we successfully launched our premium residence brand, "Exordium," serving as the driving force for the growth of the housing industry in Korea.

With our prudent management and commitment to create profits, we are proactively collecting our accrued incomes. Also, we are trying to diversity our business portfolio, which is heavily dependent on housing, by extending our businesses to overseas markets through our projects in China, etc. In addition, in order to diversify the company's business, we launched an authentic French bakery brand, Brioche Doree, as a new business in 2013 and have opened 13 stores nationwide as of the end of 2017, starting with the Yeouido branch introduced in 2013. plan to actively expand our dining business in Korea and overseas markets in earnest.

Foundation	ounded and registered as Daewoo Development Co., Ltd. Engineering and Construction in December 2011(Establishment of a new corporation after equity spinoff of the Construction Business Division of Daewoo Auto Sales)
CEO	Jason.J.HAN
No. of employees	Number of employees: 350 persons (as of January 2018)
Total capital	49.9 billion won (consolidation basis)
Businesses	Construction, civil projects, housing, and plants
Address	HQ : #601, Songdo Millennium Building, 69, Conventia-daero, Yeonsu-gu, Incheon Seoul Office : 11 th floor, Wise Tower, 17, Sejong-daero, Jung-gu, Seoul

HISTORY

1990~

- 1995 Feb.** Founded as Handok General Construction Co., Ltd.
- 1997 Jan.** Acquired as an affiliate company of Daewoo Group
- Jul.** Merger with Daewoo Automobile Sales Co., Ltd. (Daewoo Automobile Sales Construction)
- Dec.** ISO 9001 Quality Management System Certification (HSB-RS Korea)
- 1998 Aug.** Certified as 2ndGrade Contractor (Ranked 234th in order volume)
- 1999 Mar.** Changed the company name <Construction Division of Daewoo Automobile Sales Co., Ltd.>
- Aug.** Certified as a Grade 1 Contractor (Ranked 106th in order volume)
The twelve affiliate companies of Daewoo Group ordered into a work-out

2000~

- 2000 Apr.** Daewoo Group disbanded
- Aug.** Certified as a First Class Safety and Health Management Company (Minister of Labor)
- 2001 Jul.** Citation for Excellence in Prevention of Industrial Accidents
- 2002 Nov.** Work-out completed
- 2003 Mar.** Launched the new brand, iaan
- 2004 Jul.** ISO 14001 Environmental Management System Certification
- 2005 Jun.** Grand Prize for Apartment Section, Hankyong Housing Culture Award
- Aug.** Ranked 49th in Construction Capacity Evaluation by order volume, 2005
- Nov.** Established a local incorporation in China
- 2006 Feb.** Launched a new brand, Exordium
- Aug.** Ranked 42nd in Construction Capacity Evaluation by order volume
- 2007 May.** Established the Hanoi Branch Office
- Oct.** Grand Prize in Housing Power Brand Award
- Dec.** Excellency Award, Construction Sector of Korea Civil/Construction Technology Award
- 2009 Aug.** Overseas market development began in earnest in Libya (order amount 230 billion won) and Vietnam
Ranked 48th in Construction Capacity Evaluation, 2009 Civil and Building Work Capacity 635.3 billion won
- 2011 Jun.** Investment agreement to establish a spin-off (for construction businesses) with Shinheung Industrial Development Co., Ltd.
- 2012 Mar.** Established the Seoul office (Gusan Tower, 3250, Bangbae-2-dong, Seocho-gu, Seoul)
General Shareholders' Meeting for the first fiscal term
- Jun.** President Sangyoung Lee took charge
- Oct.** Grand Prize, Eco-friendly Apartment Section, Aju Economy Construction Award
- Nov.** Grand Prize, Civil and Building Work Section, the 8thMaeil Economy Award (Grand Prize – Residential Section / Dangjin Wondang iaan)

2013~

- 2013 Mar.** Awarded with Dredging Project for Mers-Alkevis Port, Algeria
- Jun.** Awarded with Asan Tangeong 1 – A4 Block Apartment Construction Project (Total Project Worth 74 billion won)
- Oct.** Launched the French Bakery Brand, Brioche Dorée in Korea
The first outlet of Brioche Dorée opened in Yeouido
- 2014 Jan.** Awarded with Seonjin Shinam Apartment Reconstruction Project, Daeju (Total worth 168.9 billion won)
- Apr.** 2ndoutlet of Brioche Dorée opened in Busan
- Sep.** Awarded with the Apartment Construction Project in Cheomdan, Gwanju (Total project worth 100 billion won)
- Oct.** Opened the 3rd branch of Brioche Dorée in Jamshil World Tower
- Nov.** Opened the 4th outlet of Brioche Dorée in Suwon Lotte Mall
- 2015 Mar.** Inauguration of the new CEO, Jason.J.HAN
- Apr.** Awarded with the Apartment Construction Project in Paju Woojeong A-20 Block (Total project worth 126.7 billion won)
- May.** Opened the 5thshop of Brioche Dorée (Hyundai Shinchon Branch)
Awarded with the apartment construction project for Dongdaegu Urban Rehabilitation Project (total project worth 194 billion won)
- Sep.** Opened the 6th outlet of Brioche Dorée (Shinsaegyee Gyeonggi Branch)
- Oct.** Opened the 7th branch of Brioche Dorée (Seorae Maeul Branch)
- 2016 Feb.** Opened the 8th outlet of Brioche Dorée in Centum City, Busan
- Mar.** Moved the Seoul Office (Wise Tower, 17, Sejong-daero, Joong-gu, Seoul)
- Apr.** Opened the 9th outlet of Brioche Dorée in Gran Seoul Branch
- Apr.** Named as an Excellent Contractor for Housing by LH
- Sep.** Awarded iaan The Seosan Project (47.8 billion won)
- Sep.** Awarded iaan Cube Officetel Project (109.2 billion won)
- Dec.** Awarded iaan Wonju Taejang Project (125.6 billion won)
- 2017 Mar.** Started franchise businesses of Brioche Dorée
- Apr.** Awarded iaan Chungju Bongbang (56.2 billion won)
- Apr.** Opened the 12th outlet of Brioche Dorée in Lotte Kimpo Branch
- Apr.** iaan Yongin Shingal order (29.3 billion won)
- Apr.** iaan Chungju Bongbang order (55.6 billion won)
- May.** Opening of Brioche Doree franchise location No. 1, Gwangju Sangmu store
- Jun.** Opening of Brioche Doree franchise location No. 2, Mapo Hapjeong store
- Aug.** Opening of Brioche Doree franchise location No. 3, Geoje Norwegian Forest store
- Sep.** housing redevelopment order for Hakjam District 1 in Pohang (107.8 billion won)
- Oct.** Opening of Brioche Doree franchise location No. 15, Apgujeong Station store
- Dec.** Bucheon Samhyeop Townhouse order (33.4 billion won)
- 2018 Jan.** iaan Okcheon Jangya order (44 billion won)
- Mar.** Opening of Brioche Doree franchise location No. 16, Yeouido Station store
- Apr.** Selected as an excellent construction company by LH (Korea Land & Housing Corporation)



Company Overview

Licenses of Daewoo Development Co., Ltd. Engineering and Construction

1996	Jul.	Electricity Installation License (No. Incheon-00081)
	Aug.	Housing Construction License (No. Incheon Joodae-2012-010)
1997	Jul.	Civil and Building Work License (No. Togeon 1726)
1998	Jan.	Specialized Fire-fighting Facilities Installation License (Incheon Gongdan 2012-5)
1999	Jun.	Industrial Equipment Installation License (Saneopseolbi 04-0001)
2001	Jun.	Overseas Construction License (Civil and Building Works) (No.313)
2000	Jul.	Landscaping Work License (Jokyoung 04-0007)
2004	Dec.	Information and Communication Equipment Installation License (No. 320009)
2005	Mar.	Overseas Construction Licenses <ul style="list-style-type: none"> Industrial Environment Equipment Installation (No. 1000) Landscaping Work (No. 52) Electrical Equipment Installation (No. 407) Information and Communication Equipment Installation (No. 175)

Awards of Daewoo Development Co., Ltd. Engineering and Construction

1999	Sep.	Citation Plaque from Mayor of Incheon (Construction and Completion of Incheon Grand Park Development)
		Construction Award (Bronze Prize) from Mayor of Daegu (for Dacom Co., Ltd.'s Daegoo communication Station)
	Nov.	Citation Plaque from Mayor of Incheon (for Daewoo North-Eastern Asia Exchange Center, Incheon University)
2000	Aug.	Named as a First Class Safety and Health Management Company (Ministry of Labor)
2001	Jul.	Named as an Excellent Company for Prevention of Industrial Accidents (Ministry of Labor)
	Oct.	The 6th Gyounggi Construction Culture Award (Aju University Campus Plaza)
2004	Jul.	ISO 14001 Environment Management System Certification (KPC)
	Nov.	Gold Prize, Grand Advertisement Award, Maeil Economy (Construction Section)
2005	May	Citation for Contribution to Environmental Preservation (Ministry of Environment)
		Citation for Contribution to Development of Construction and Transportation Affairs (Ministry of Construction and Transportation)
	June.	Grand Prize, Hankyung Housing Culture Award
2006	Apr.	Grand Prize, Apartment Brand Award (Customer Trust) (Money Today)
2007	Oct.	Grand Prize, FN Housing Power Brand
	Dec.	Excellency Prize, Korea Civil Engineering and Building Technology Award (Maeil Economy, Korea Construction Association, Korea Civil Engineering Association)
2009	Oct.	Citation Plaque from Mayor of Gangnam District (2 lots including 159, Samsung-dong, Gangnam-gu were selected as the Buildings for Exhibition)
2012	Apr.	Spring Academic Conference Citation Plaque (Korea Construction Association)
	Oct.	Grand Prize for Eco-Friendly Apartment, Aju Economy Construction Award
	Nov.	Grand Prize, 8thMaeil Economy Civil Engineering and Construction Technology Award (Grand Prize for Housing / Dangjin Wondang iaan)
2014	Nov.	Citation for Excellency in Design Improvement, VE Activities, Process Management, and Quality Management (LH) / Asan Tangeong Site
	Dec.	Citation for Excellent Work Site for Quality and Process Management (Ministry of Land and Transportation)
2015	Mar.	Citation for Accident-Free Work Site (Korea Industrial Safety and Health Corporation) / Seosan Techno Valley Site
	May	Citation for Contribution to Industrial Accident Management (Ministry of National Safety) / Seosan Techno Valley Site
	Oct.	Construction Evaluation Grade A (LH) / Asan Tangeong Site
2016	Apr.	Selected as an Excellent Contractor by LH for Residential Facilities
2017	Jul.	Awarded certificate for construction administration advancement (Mayor of Gyeongsan City / Iaan Gyeongsan Jinnyang)
	Sep.	Awarded certificate for contribution to quality Improvement (President, Green Biotechnology Research Institute, Seoul National University / Ulijn Water Treatment Plant)
	Sep.	Awarded certificate for contribution to quality Improvement (Korea Land & Housing Corporation Paju Business Division / Paju Unjung Apartment Lot No.16)
	Dec.	Awarded certificate for community development (Minister of Public Administration and Security / Earthquake response on November 15, 2017)
	Dec.	Awarded certificate for sincere performance of safety management duties (Daejeon Regional Employment Labor Office Boryeong Provincial Director / Iaan the Seosan)
2018	Jan.	Acquired A Grade a construction evaluation (Korea Land and Housing Corporation / Paju Unjeong Apartment)
	Apr.	Selected as an excellent construction company by LH (Korea Land & Housing Corporation)



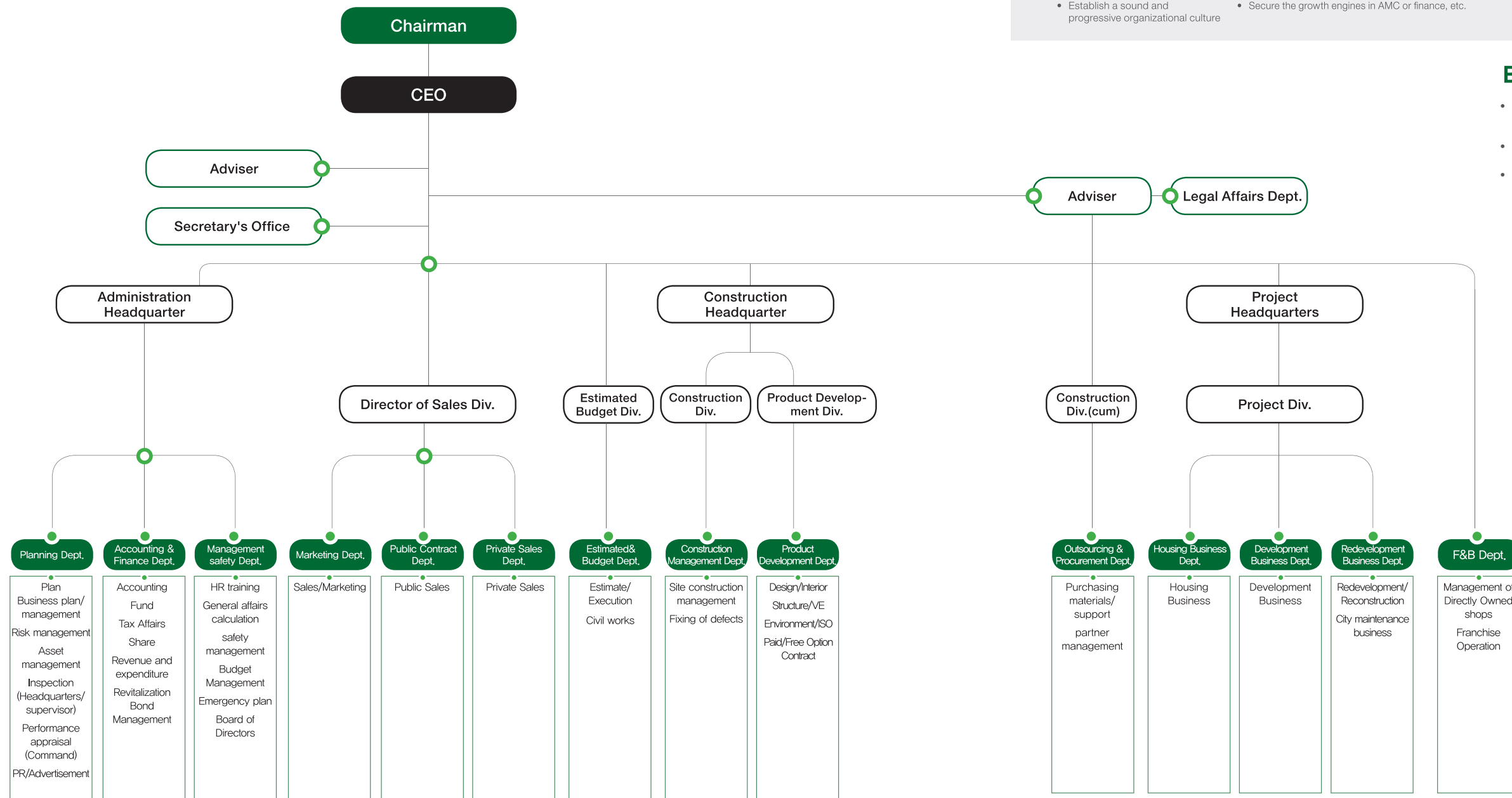
Company Overview

CERTIFICATE FOR COMPANY-ATTACHED RESEARCH CENTER AND
COPYRIGHT REGISTRATION CERTIFICATE

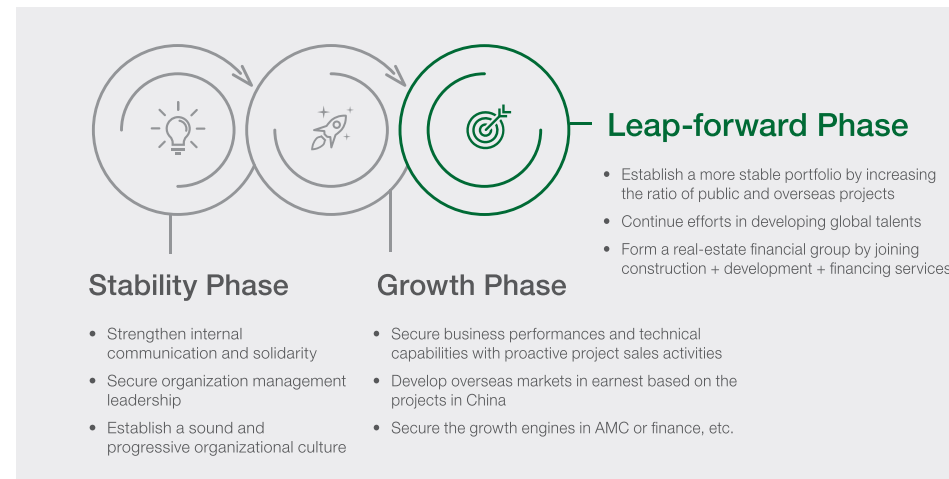


Company Overview

ORGANIZATION CHART



VISION Mid/Long-term Future Strategy



MAN POWER

- Secure the manpower with the highest quality in the industry
 - Establish a business division with former Daewoo E&C employees
- Secure top-rate technical specialists
 - Professional engineers, engineers and industrial engineers in the Civil engineering / building work, etc.

BRAND

- Launching of an eco-friendly housing brand "iaan"
- Launching of a premium housing brand "Exordium"
- Launching of Europe's No. 1 Bakery Brand "Brioche Dorée"

LICENSE

- Construction license for Korea and other countries
 - 7 domestic licenses
 - 5 Overseas Construction Business Licenses

REFERENCE

- Wide experience and reference records in the field of construction
 - Various projects in public, private, housing, and overseas projects
- Acceleration of the development of foreign markets
 - Establishing local incorporations and branches in Libya, Malaysia, and China, etc.

Another leap-forward by "strengthening the core capabilities"

Practical tasks



First-class products for first-class customers

- Mind-sharing with the customers
- Establish consistency in brands and qualities
- Apply new technologies to create values



Rationalization of the Management System

- Establish a balanced portfolio
- Sales management focused on cash
- Establish an efficient sales and field support system



Establish an open corporate culture

- Secure and develop global talents
- Establish a rational corporate culture
- Settlement of knowledge-based, ethical management

Company Overview

OUR BRANDS

iaan

As the practical space and storage design, pleasant and safe complex design, and various convenient facilities and futuristic residential trend to be able to live in affluent environments, all the lives are included in iaan from the children to the aged.

This eco-friendly brand, meaning that all the values the customers want are inside our houses, was launched in 2003, with the slogan "It's Different Inside" to enhance our brand power, and is now actively promoted with our differentiated marketing campaigns.



EXORDIUM

Where the best meets the best,
The Luxury Life – this is the value of iaan Exordium

Exordium, which means the origin of all things, is the luxury residential-commercial apartment brand of ours that represents the philosophy of the construction division that aims to build the best residential spaces in the world.

The top class premium housing brand, Exordium, is a brand that was developed to realize the life space that suits the leaders who lead the world. Since its successful launch in 2006, the brand has been serving as the growth engine for the domestic housing market.



Brioche Dorée

Europe's No. 1 bakery brand, Brioche Dorée, is the traditional bakery brand of the top dining company, Le duff, of France. The brand, which is loved by the French people and has more than 550 shops worldwide, is the most representative bakery brand in France. This top brand of Europe was launched in Korea by Daewoo Development's dining brand in 2013.

Brioche Dorée is a combination of the words Brioche, meaning soft French bread with a strong taste made of milk, butter, and fermented by yeast, and Dorée meaning golden color. Therefore, Brioche Dorée means a tasty-looking golden bread. The top-tier artisans with MOF(Meilleurs Ouvriers de France / *a craftsman certification agency) certificates from France deliver the traditional tastes and style of French bakery based on authentic baking methods.

- **A variety of menus to choose from the morning to the evening**
 - Menu developed based on the recipes of Jean- Jacquesmasse, who won the Craftsman Medal of France in 1996
 - Provide Traditional French bread and sandwich and high quality dessert and pastry
 - Unique flavor based on its tradition and know-how
- **The shops with traditional styles where the Customers can enjoy Brioche by the warm and golden flavor of bread fresh out of the oven.**
- **Located in major commercial districts and downtown areas, shopping malls, airports, railway stations, highways, etc.**

Brioche Dorée

Le Duff Group

- Founder: Mr. LE Duff
- EUR 2.01 billion sales in 2016 (about KRW 2.4 trillion)
- 1,658 shops in 80 countries all over the world
- Developed overseas markets in France, Europe, Middle East, South America, North America, China, etc.
- Visited about 1,000,000 everyday
- Regular visit of 60% of all customers
- 35,420 employees
- Newly open annual average of 200 shops

<http://www.groupeleduff.com>

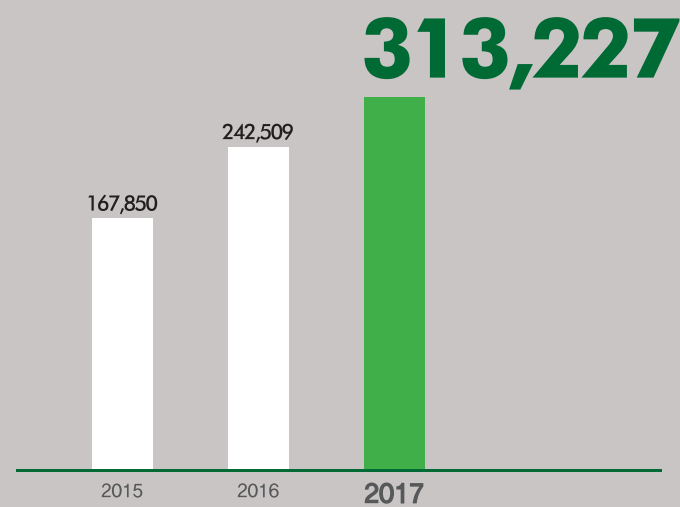


Financial Review & Outlook 2018

Operation Performance

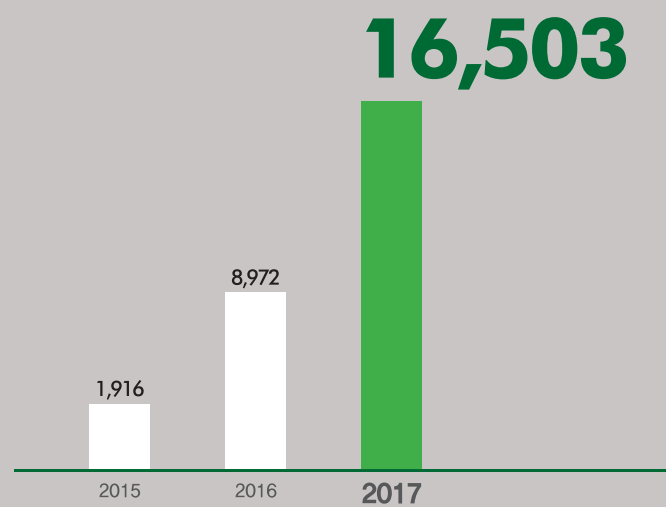
SALES

(Unit: Million Won)



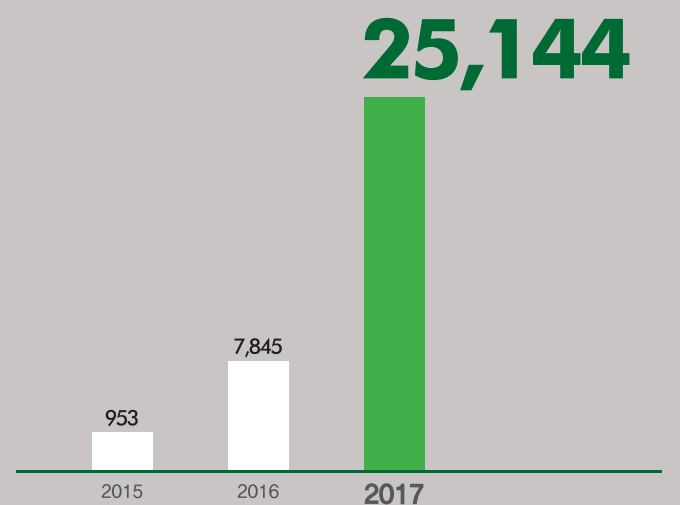
OPERATION PROFIT

(Unit: Million Won)



NET PROFIT

(Unit: Million Won)

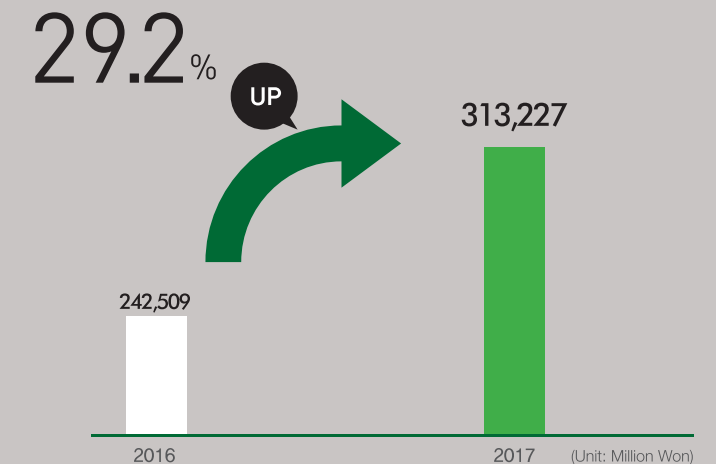


GRADUAL GROWTH CONTINUES IN 2017 WITH SALES OF KRW 313.2 BILLION.

Gradual growth continues in 2017 with sales of KRW 313.2 billion. We are continuing to improve our management index based on the successful completion of the Iaan Gwangju Cheomdan and Iaan Gyeongsan Jinryang projects as well as sales of KRW 313.2 billion and cash flow secured from key work sites such as Iaan Dongdaegu in 2017. We have won new orders for Hanam Gamyil Apartments Lot No. 3 (LH Corporation), Yongin Shingal, Osan University Urban Housing, Donghae Cheongok, Chungju Bongbang, Bucheon Samhyeop, and Pohang Hakjam. At the end of 2017, our total order backlog increased 31% year-on-year to KRW 1114.3 billion, reflecting the non-commencement of construction (KRW 710.7 billion).

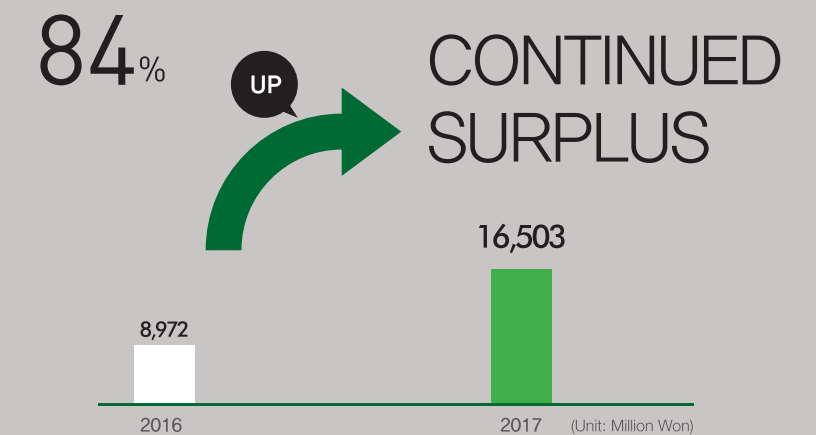
COMPARISON OF SALES & OPERATING PROFIT

2016 VS. 2017 IN SALES



PROFITABILITY INCREASED BY 29.2% YOY IN 2017 COMPARED TO 2016

OPERATING PROFIT COMPARISON BETWEEN 2016 AND 2017



CONTINUED SURPLUS IN 2017 WITH AN 84% INCREASE IN OPERATING PROFIT COMPARED TO 2016

(Unit: Million Won)

	2015	2016	2017
Sales	167,850	242,509	313,227
Selling and administrative expenses	10,577	13,087	18,806
Operating profit	1,916	8,972	16,503
net profit	953	7,845	25,144
Total assets	131,773	164,940	197,601
Total Debt	112,866	138,560	147,706
Total amount of capital	18,907	26,380	49,895

Financial Review & Outlook 2018

Order Awarding Performance and Outstanding Orders

NEW ORDERS

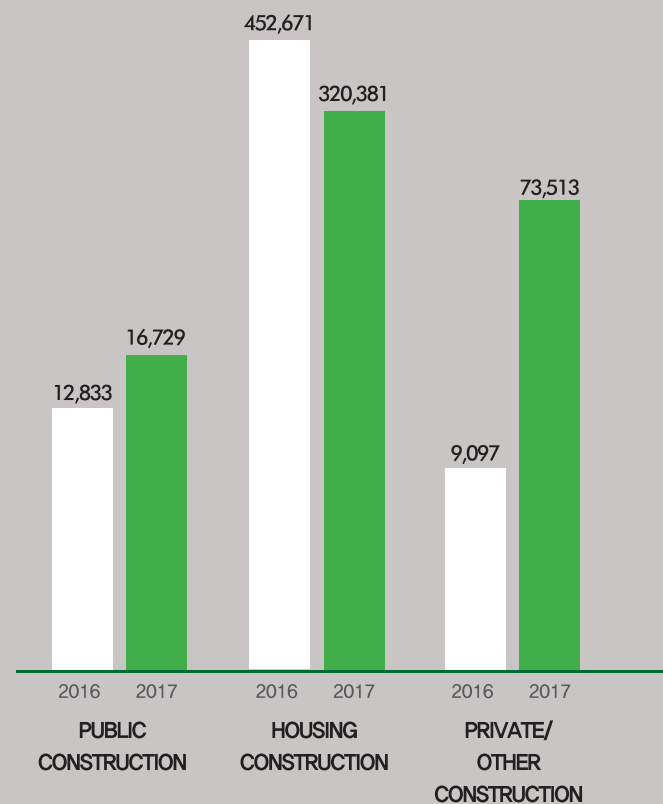
(Units: Million KRW)

〈ORDER COMPARISON BETWEEN 2016 AND 2017〉

In 2017, we achieved orders of KRW 410.6 billion, a slight decline due to rising competition. We are maintaining annual orders of KRW 400 billion.

TOTAL FOR 2016
474,601

TOTAL FOR 2017
410,623



ORDER BACKLOG

(INCLUDING SITES WHERE CONSTRUCTION HAS NOT BEEN STARTED)

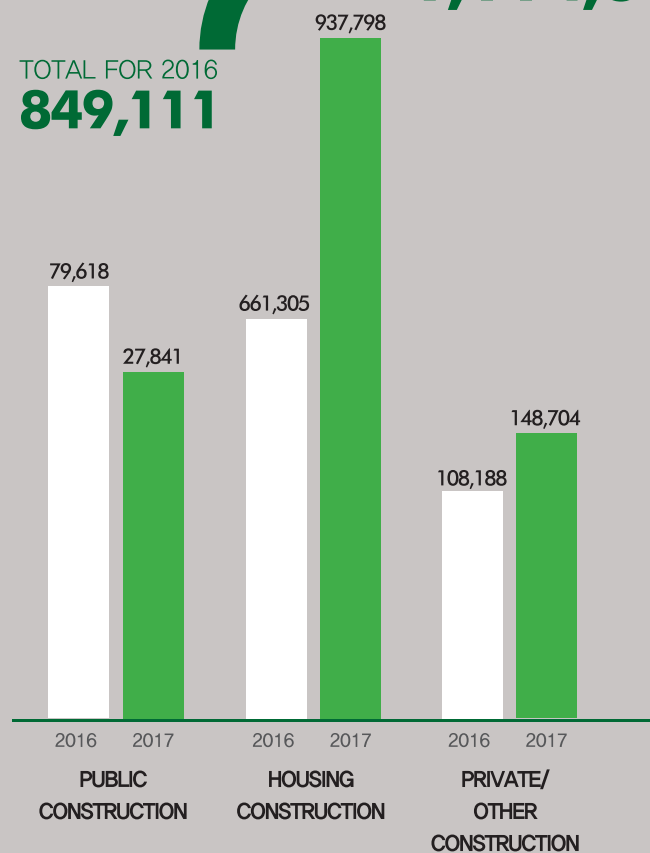
(Units: Million KRW)

〈ORDER BACKLOG COMPARISON BETWEEN 2016 AND 2017〉

As of the end of 2017, the total order backlog was KRW 1,114.3 billion, an increase of 31% over the previous year.

TOTAL FOR 2016
849,111

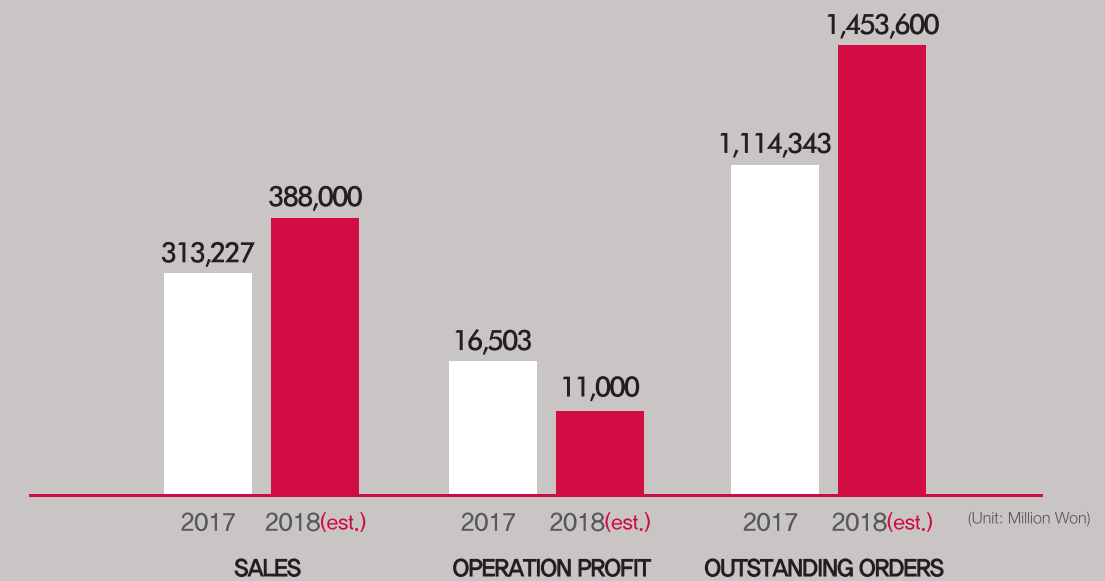
TOTAL FOR 2017
1,114,343



OUTLOOK 2018

In 2018, the construction market is expected to continue suffering from external political uncertainties, the realization of SOC budget cuts, and deterioration in the local housing market due to difficulties in the manufacturing industry related to shipbuilding, steel and automobiles. Due to measures 8.2 and 10.24, it is expected that demand for distribution will decrease nationwide due to an increase in the offerings of multi-home owners and US interest rate hikes. Differentiation between good and bad construction companies will thus proceed in earnest. Consequently, we have

been able to increase our total sales in 2018 to KRW 388.0 billion (a 22.9% increase to KRW 378.9 billion for construction sales goals, and an 84.4% increase to KRW 9.1 billion for restaurant sales) by targeting selective construction orders through strengthened risk management and early construction of strategic business sites. Gross profit is expected to reach KRW 33.5 billion, about 97% of KRW 34.5 billion in 2017, with an order backlog of KRW 1,453.6 billion. Despite difficulties in the external environment, the company will continue to grow.



Brioche Dorée



French Bakery Café

New Shops Development Plan

Target : OPENING 100 STORES BY 2022

Enter into the Chinese market : In 2018, opening our stores in Guangzhou and Shenzhen, China.

YEAR.	2017	2018	2019	2020	2021	2022
DIRECT STORES	10	3	3	3	3	3
AFFILIATED STORES	3	10	12	16	16	18
TOTAL	13	13	15	19	19	21
CUMULATIVE (TOTAL)	13	26	41	60	79	100

*FIGURES THAT DO NOT REFLECT THE CHINESE MARKET



BUILDING WORKS

- 01
Architecture
- 02
Institute & Education
- 03
Apartment
- 04
High-rise Apartment / Officetel
- 05
Urban Residence
- 06
Overseas

A single building can change the entire landscape of a city. Daewoo Development Co., Ltd. Engineering and Construction goes beyond simply erecting a building on the ground. We consider the composite functioning of the city, comfortable environment, efficiency in spaces, advanced IT systems, and ergonomic elements in residential facilities. We aim to provide total E&C services to our clients and to exceed their expectations, whether it be offices, public buildings, retail outlets, research or medical facilities.

Key reference Project : KGIT Center, Sangam-dong, Mapo-gu, Seoul

Project Owner : Handok Industrial-Academic Cooperation Complex Co., Ltd.

Project Period : April 2004 - August 2007

Architecture

We provide an advanced business environment and are leading the era of digitalization. We provide office buildings of a different quality, going beyond mere office spaces to create an advanced intelligent system combined with beautiful appearances, increasing productivity and enhancing the image of the city alike, as the space is reborn as a compound space. Daewoo Development has built many office buildings, such as Seoul City Tower, that are noteworthy. We build landmarks, which are perfect in every aspect.

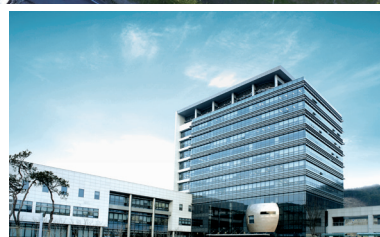
Multi-purpose business buildings should be able to accommodate increasing social demands. They have to be built without flaws with superb construction techniques, and the buildings should enhance the economic and cultural status of the surrounding area. Coex Artium, built in Samsung-dong, the heart of Gangnam area, displays a new value that expands the foundations of culture.



1 2



- 1 BUSAN KISWIRE CENTER
- 2 SEOUL CITY TOWER
- 3 CITY HALL, CHEONAN-SI
- 4 COEX ARTIUM
- 5 HERALD BUILDING
- 6 KORAD HQ



3 4



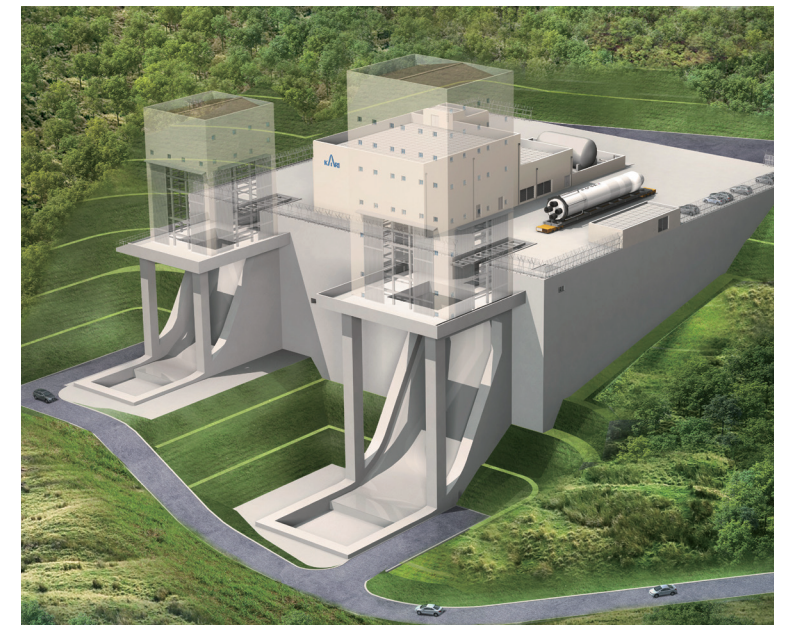
5 6



- 1 KOREAN PROJECTILE TEST FACILITY(GOHEUNG)
- 2 GENERAL BUILDING, AJOU UNIVERSITY
- 3 INDUSTRIAL-ACADEMIC COOPERATION CENTER, SEOUL NATIONAL UNIVERSITY
- 4 SONGDO GLOBAL CAMPUS, YONSEI UNIVERSITY
- 5 JUJE STATION

Institute & Education

We build flawless buildings so that the occupants may concentrate on their studies and researches. Research facilities and educational facilities are the determinant factors for the future of the country, and the builders of such spaces should ensure that they can serve the demands of future talents and technical development efforts successfully. GM Cheongra Technical Research Institute, Korean Projectile Testing Facility (Goheung), Seoul Industrial-Academic Cooperation Center of Seoul National University (Pyeongchang), General Building of Aju University, and Songdo Global Campus of Yonsei University, are examples of such flawless spaces built by us.



1



2 3 4



5

Apartment

We build our apartments as we build homes for our families. Daewoo Development Co., Ltd. Engineering and Construction which has been developing its expertise in the housing business, launched its own eco-friendly premium apartment brand, iaan, in 2003.

The comfortable and healthy residential environment, the ubiquitous environment that allows the users to enjoy the world of networks freely, and the life culture programs for lively community experiences, are increasing the level of satisfaction of our customers with a housing culture that rises to the next level.



- 1 PAJU UNJEONG APARTMENT(A GRADE A CONSTRUCTION EVALUATION BY LH, SELECTED AS AN EXCELLENT CONSTRUCTION COMPANY BY LH)
- 2 ASAN TANGJEONG APT(A GRADE A CONSTRUCTION EVALUATION BY LH, SELECTED AS AN EXCELLENT CONSTRUCTION COMPANY BY LH)
- 3 DANGJIN WONDANG iaan
- 4 NAMYANGJU iaan
- 5 DAEGU WOLBAE iaan



- 6 iaan SEOSAN TECHNO VALLEY
- 7 iaan GWANGJU CHEOMDAN
- 8 iaan HONGSEONG NAMJANG
- 9 iaan GYEONGSAN JINLYANG



1 2

3 4



1 2

High-rise Apartment / Officetel

- 1 HAEUNDAE JOONGDONG iaan
- 2 YONGSAN iaan
- 3 ULSAN SHINJEONG iaan
- 4 SANGAM DAEWOO MY HOME

We create a space of synergy for residences and office spaces. The social structure is changing rapidly. But, the basic demands for housing and office spaces never change. We provide Officetels, which is the best place to enjoy life and work at the same time, increasing work productivity and comfort in life. The facilities are equipped with the most advanced technical systems, and the properties will further enhance your health and wealth. These Officetels are built by Daewoo Development Co., Ltd. Engineering and Construction with pride and honor.

- 1 ULSAN TAEHWA RIVER EXORDIUM
- 2 HAEUNDAE EXORDIUM

Urban Residence

Exordium aims to become the representative brand name of Korean housing culture. The best commercial-residential building brand launched in 2006 bears the economic and class that represent the ear. With perfect harmony between residential spaces and commercial spaces, the facility provides comfort in life. And, the brand realizes the next level premium life style through the best locations, differentiated designs, high quality finishing materials and interior designs.

Overseas

Now, we are expanding our businesses to the world.

We will make the know-how we developed in Korea shine in the world market. With the challenging spirit and the philosophy of Quality First of Daewoo Development Co., Ltd. Engineering and Construction, we demonstrate and display world class construction technologies. With the First Phase of the Compound Building Project in Hanoi and the KISWIRE Project in Hochiminh (Phase 1), we are expanding the constructional territory of Korea and becoming a pillar of the national economy.

- 1 DONGGUAN HYATT HOTEL CONVENTION CENTER & SERVICED RESIDENCE, CHINA
- 2 HANOI CITY COMPLEX/D-WALL & PILLING WORKS, VIETNAM
- 3 SUZHOU TIME SQUARE OFFICE BUILDING/CM, CHINA
- 4 KUNSHAN JIAN HANSEONG NEW CONSTRUCTION/CM, CHINA
- 5 CONSTRUCTION OF KISWIRE VIETNAM FACTORY--PACKAGE NO.1, VIETNAM
- 6 KISWIRE R&D CENTER, MALAYSIA
- 7 BENGHAZI INFRASTRUCTURE ZONE-6, LIBYA

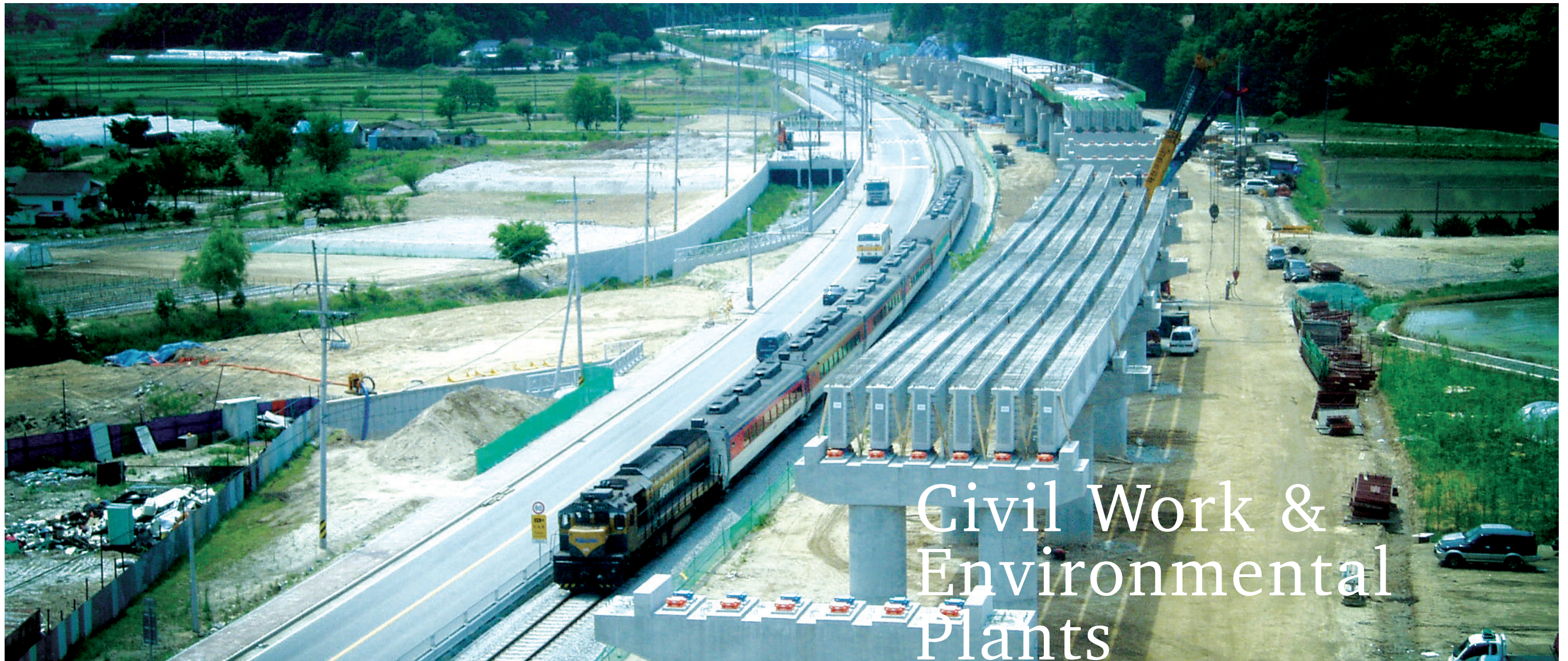
1 2



3



4 5
6 7



Civil Work & Environmental Plants

Our new challenge is to change the map of South Korea, and, in the process, we will lay the foundation for enhancing the value of the land of this country and its competitiveness. Based on the highest level of technology and quality, Daewoo Development Co., Ltd. Engineering and Construction has been recognized as a superb contractor in the field of civil engineering and construction and engaged in road building, land reclamation, and many other civil engineering projects, contributing to the progress in this country. Plant construction is a highly technology-intensive industry which requires universal expertise in plants, in order to complete the projects on a turn-key basis. Daewoo Development Co., Ltd. Engineering and Construction will lay the foundation for the prosperous future of South Korea with its technical capabilities in oil refinery, gas, petrochemical, power plants, environment, and other large-scale plants, so that everyone in this country may live in a comfortable environment.

Performance Highlights

Key reference Project : Sector 8, Kyoungchoon Highway
Project Owner : Public Procurement office (Korail)
Project Period : December 1999 ~ December 2011

Civil Works

We construct the artery of logistics and transportation of South Korea. The civil engineering industry is also the foundation of the balanced development for local communities and the industrial development of the country. Daewoo Development has been recognized for its technical expertise with large projects such as the Northern Access Road for Incheon International Airport, Songdo – Neunghae Road Construction, Sector 8 of Kyoungchoon Highway, Seoul Metro Line No. 7, and Line No. 2 of Incheon Subway, as well as its participation in the construction project for Incheon Bridge connecting road .

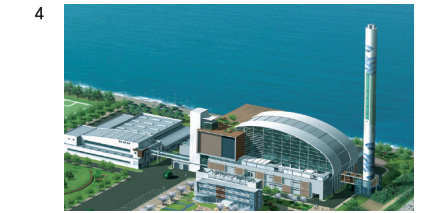
Leisure infrastructure will enhance the happiness index of the people. Daewoo Development Co., Ltd. Engineering and Construction is playing its role in increasing life satisfaction levels. In the midst of cut-throat global competition, South Korean people are working hard to support their families and their country. And, for these people, we are building the best leisure business infrastructure. Daewoo Development Co., Ltd. Engineering and Construction has constructed Incheon Grand Park and other high-level cultural facilities such as Ansong Golf Course and Joongrang Ecological and Cultural Park.



- 1 Incheon Bridge Connecting Road
- 2 Northern Access Road, Incheon International Airport
- 3 Mooring Ground, Incheon International Airport
- 4 Compound Facility, Songjeui Stadium

Environmental Plants

The plant construction business requires a high level of technical expertise in order to engage in turn-key contracting activities. Daewoo Development Co., Ltd. Engineering and Construction is equipped with technical capabilities in oil refinery, gas, petrochemical, power plants, environment, and other large scale plants, with which we will lay the foundation of a more prosperous future of South Korea in a more comfortable environment. We will make the world a better place by protecting and preserving our clean environment. With our corporate philosophy which values the people and the environment over anything, we conduct our eco-friendly businesses. With our environmental plants, such as Incheon Waste Incineration Plant, Southern Incheon Metropolitan Waste Treatment Plant, Kajwa Waste Water Treatment Plant, Bupyeong Water Purification Plant, Hakik Waste Water Treatment Plant, and Kijang Waste Water Treatment Plant, etc., we will preserve nature and protect clean leaving environments.



- 1 Incheon Household Waste Incineration Plant
- 2 Pyeongtaek Ssangyong Motors Factory
- 3 Incheon Gajwa Waste Water Treatment Plant
- 4 Southern Incheon Metropolitan Household Waste Treatment Plant
- 5 Bupyeong Factory, GM Daewoo Motors
- 6 Changwon Engine Factory

CONSTRUCTION ACCOMPLISHMENT IN EACH CONSTRUCTION FIELD (PUBLIC/HOUSING/OVERSEAS PROJECTS)

RATHER THAN LOOKING BACK ON
WHAT WE DID,
WE WILL LOOK AHEAD AT WHAT WE
ARE GOING TO DO.

DAEWOO DEVELOPMENT CO., LTD.
ENGINEERING AND CONSTRUCTION
HAS BEEN GROWING AT AN
ASTONISHING RATE IN SPITE OF ITS
SHORT HISTORY. WITH THE SPIRIT
OF A NEW LEADER WHO BUILDS
A NEW WORLD, WE WILL STAY
COMMITTED TO COMPLETING OUR
TASKS.

Civil Engineering/Environment/Plant Project References

Project name	Client	project period
Jinheung Casting Plant	Jinheung Casting	'97.04 ~ '98.02
Engine Research Center, Gunsan Daewoo Motors	Daewoo Heavy Industries & Machinery	'97.04 ~ '98.03
Maintenance Workshop, Sacheon Air Field	Daewoo Heavy Industries & Machinery	'97.06 ~ '99.03
Waegwan Shipping Center	Own project	'97.12 ~ '98.11
Incheon Grand Park	City of Incheon	'97.12 ~ '99.08
Korea EMS Plant	Korea EMS	'97.12 ~ '99.04
Eonyang Shipping Center	Own Project	'98.02 ~ '99.07
Northern Access Road, Incheon International Airport	Incheon International Airport Corporation	'98.02 ~ '99.12
Bupyeong Daewoo Motors Plant	Daewoo Motor Company (GM KOREA COMPANY)	'98.03 ~ '04.12
Gunsan K-1 Ground Improvement	Daewoo Heavy Industries & Machinery	'98.07 ~ '98.09
Gunsan Daewoo Motors Plant	Daewoo Motor Company (GM KOREA COMPANY)	'98.07 ~ '04.12
Pyeongtaek Ssangyong Motors Factory	Ssangyong Motor Company	'98.07 ~ '05.08
Songdo-Neunghae Road	Incheon General Construction HQ	'98.09 ~ '01.09
Incheon Household Waste Incineration Facility	Incheon General Construction HQ	'98.12 ~ '02.10
Songdo Unloading Center	Own Project	'99.03 ~ '99.07
Infrastructure construction in ICN upon request from an external agency	Incheon International Airport Corporation	'99.03 ~ '01.07
Y-200 Project	Ssangyong Motor Company	'99.07 ~ '01.09
Poongdong-Yongdu Detour Road	City of Chungju	'99.12 ~ '05.12
Road Base Construction, Sector 8, Kyounghoon Dual Railway	KORAIL	'99.12 ~ '09.12
Bupyeong XK Engine Factory	Daewoo Motor Company (GM KOREA COMPANY)	'99.12 ~ '01.11
Gajwa Waste Water Treatment Plant (2nd phase expansion)	Incheon General Construction HQ	'00.09 ~ '04.04
Gajwa Waste Water Treatment Plant	Incheon Construction HQ	'00.09 ~ '04.04
Jeonido IC - Shinwon Regional Expressway expansion to four lanes	Busan Regional Construction and Management Administration	'01.05 ~ '06.12
Construction of the Dredged Soil Dumping Year for Bukhang Port, Incheon	Incheon Regional Maritime Affairs & Port Office	'01.07 ~ '04.07
Construction of Lakeside Facilities, Sosanhakdo, Mokpo Inner Port	Mokpo Regional Oceans & Fisheries Administration	'01.08 ~ '02.12
Gohseung Port Construction	Yeosu Regional Oceans & Fisheries Administration	'02.02 ~ '08.02
Tamjin River Flood Control Project	Iksan Regional Construction and Management Administration	'02.07 ~ '05.08
Giang Waste Water Treatment Plant	Busan Construction HQ	'02.08 ~ '05.08
Expansion of regional express way from Andong to Seohu	Busan Regional Construction and Management Administration	'02.11 ~ '09.12
Expansion of regional express way from Seohu to Pyeongseon	Busan Regional Construction and Management Administration	'02.11 ~ '07.10
Pier Facilities, Dongguk Steel	Dongguk Steel Mill Co., Ltd.	'02.12 ~ '06.07
Flood Control Project for Sappyocheon	Daegu Regional Construction and Management Administration	'03.05 ~ '07.05
Lighter's Wharf Renovation, Incheon Southern Port	Youngjin Corp.	'03.08 ~ '04.03
Southern Incheon Metropolitan General Household Waste Treatment Facility	City of Incheon	'03.08 ~ '06.05
Improvement of Bupyeong Water Purification Plant	Waterworks Headquarters Incheon Metropolitan City	'03.12 ~ '08.04
Road from Samsan to Joongdong	Incheon Regional General Construction HQ	'04.01 ~ '06.07
Road from Suanbo IC to Suanbo	Daegu Regional Construction and Management Administration	'04.01 ~ '10.12
Residential Complex Development, Gunsan Susong Sector 2	LH	'04.04 ~ '07.01
Mooring ground, boarding pavilions, ICN	Incheon International Airport Corp.	'04.08 ~ '07.12
Lexxon 20 JOB	Ssangyong Motors Co., Ltd.	'04.09 ~ '05.04
Bupyeong Factory of Daewoo Motors Co., Ltd.	GM Daewoo Auto & Technology Company	'05.01 ~ '10.12
Gunsan Factory of Daewoo Motors Co., Ltd.	GM Daewoo Auto & Technology Company	'05.01 ~ '08.06
Nonsan IC Land Bridge and two more bridges (Total overhaul)	KOROAD	'05.03 ~ '06.10
Songdo Urban Planning Road	Own project	'05.05 ~ '05.11
Hakik Waste Water Treatment Plant, Incheon	Incheon General Construction HQ	'05.08 ~ '08.08
Extension of Seoul Metro Line No. 7 to Incheon	Incheon Metropolitan Urban Railroad Construction Headquarters	'05.08 ~ '11.03
Sector 706, Seoul Metro Line No. 7	Incheon Metropolitan Urban Railroad Construction Headquarters	'05.08 ~ '12.12
Boryeong Factory, GM Daewoo	GM Daewoo Auto & Technology Company	'05.09 ~ '06.10
Connection road of Incheon Bridge	KOROAD	'05.12 ~ '09.08
Road from Woonam to Mangwon	Iksan Regional Construction and Management Administration	'06.01 ~ '10.12
Poseung Factory, Ssangyong Motors Co., Ltd.	Ssangyong Motor Company	'06.02 ~ '07.10
Chugwon Factory for GM Daewoo	GM Daewoo Auto & Technology Company	'06.05 ~ '07.04
Water supply facilities for Baekwon Area	Yongin Water Service Group	'06.10 ~ '09.07
River improvement of Wola Area, Namgang-Jinju	Busan Regional Construction and Management Administration	'07.02 ~ '12.02
Access road to the regular pier, Gwangyang Pier	Yeosu Regional Oceans & Fisheries Administration	'07.03 ~ '10.05
Gunsan Factory, Tata Daewoo Commercial Vehicles	GM Daewoo Auto & Technology Company	'07.05 ~ '09.12
Ansung Golf Course	EonCPC Korea Co., Ltd.	'08.01 ~ '09.12
Landscaping of Jinjeop Sector, Namgang Jinju	LH	'08.03 ~ '11.06
Buffer Undercurrent Facility for Gumi Industrial Complex 1	KECO	'08.05 ~ '09.10
Expansion of Gacheonri Factory, Hongdeok Textile	Hongdeok Textile Co., Ltd.	'09.03 ~ '09.07
Construction of Joonggrang Eco Cultural Park	Joongbu Green City Group	'09.04 ~ '10.06
Sector 207, Incheon Metro Line No. 2	Incheon Metropolitan Urban Railroad Construction Headquarters	'09.06 ~ '16.10
Rainwater Pipeline, Songhyun District, Andong	Korea National Housing Corporation	'09.07 ~ '10.04
Improvement of the repeatedly flooded areas along Budongcheon	Jeollanamdo Provincial Government	'09.07 ~ '16.05
Sector 3, Gyeongin Ara Cana	K-WATER	'09.07 ~ '11.12
Improvement of the repeatedly flooded areas along Budongcheon	Jeollanamdo Provincial Government	'09.07 ~ '14.07
Sangrok Golf Course, namwon	Government Employees Pension Service	'09.11 ~ '12.08
Wastewater Pipe Line Improvement, Incheon	Incheon Nambu SMC Co., Ltd.	'09.11 ~ '13.07
Road construction from Cheji Bridge to Incheon	Incheon General Construction HQ	'10.04 ~ '12.06
Improvement of Underpass on Regional Expressway No. 42, Mokkam Underpass	City of Jecheon	'10.11 ~ '13.11
Improvement of wastewater pipe line, Jecheon	City of Jecheon	'11.03 ~ '14.05
Haman Autoparts Plants	Hanyang SKC Co., Ltd.	'12.05 ~ '13.06
Inseon Automobile Logistics Center	Inseon Motors Co., Ltd.	'12.10 ~ '13.10
Relocation of the pipe lines at Mokkam Underpass	K-WATER	'13.12 ~ '15.12
Chilwon Phase 2 sewage pipe maintenance project	Environmental Management Facility in Haman-gun	'14.04 ~ '17.05
Sector 1, Seknam Extension, Seoul Metro Line No. 7	Incheon Metropolitan Urban Railroad Construction Headquarters	'14.09 ~ in progress
Incheon International Airport landscape construction lot No. 2	Incheon International Airport Corporation	'15.02 ~ '17.11
Water Purification Plant in Ulsan	Clean Water Center in Ulsan	'15.12 ~ in progress
Yeosu Public Sewage Treatment Facility	Yeosu Waterworks Project Team	'16.12 ~ in progress
Yangbyeong Retarding Basin Reservoir	Seoul Regional Procurement Service	'16.12 ~ in progress
Geomundo Port Maintenance Work	Yeosu Regional Maritime Affairs & Fisheries Office	'17.11 ~ in progress
Incheon Geomdan New Town Tunnel Construction	Incheon City Corporation	'18.03 ~ in progress

Building Projects References

Project name	Client	project period
Bundang Daewoo Automobile Building	Own project	'96.10 ~ '99.04
Shinsung Tongsang Co.,Ltd HQ	Shinsung Tongsang Co.,Ltd	'97.01 ~ '99.02
Studio apartment, Woncheon-dong, Suwon	Daewoo Hakwon	'97.03 ~ '98.09
Yongin Logistics center	Daewoo Telecom Co., Ltd	'97.06 ~ '08.06
Yooхва Fashion Building, Daegu	Yooхва Co., Ltd.	'97.07 ~ '99.09
Chungwon Logistics Center	Daewoo Elec. Co., Ltd.	'97.07 ~ '99.10
Daewoo Center, Daegu	Daewoo E&C Co., Ltd.	'97.08 ~ '99.10
Gunsan Occupational Training Center	Daewoo Motors Co., Ltd.	'97.09 ~ '98.12
DACOM Communication Station, Dongdaegu	DACOM	'97.09 ~ '99.07
Suwon Campus Plaza	Aju University	'97.09 ~ '00.05
Automobile Research Center, Daeseon College	Daeseon College	'98.05 ~ '99.07
X-Zone Building, Busan	Daewoo Corp.	'98.09 ~ '99.03
City Tower, Seoul	Seoul City Tower Co., Ltd.	'98.09 ~ '02.02
North-Eastern Asia Dormitory, Incheon National University	Daewoo E&C Co., Ltd.	'98.10 ~ '99.12
Sejin Building, Wonyu	Sejin Computer Land Co., Ltd.	'98.12 ~ '99.12
Seoul Automobile Auction Center	Own project	'99.07 ~ '00.04
Boryeong Culture and Art Center	Daewoo E&C Co., Ltd.	'99.10 ~ '02.02
Hana Hospital Bucheon	Hana Medical Foundation	'99.11 ~ '01.05
Facilities requested by external agencies, ICN	Incheon International Airport Corporation	'00.04 ~ '02.05
KORAD Office, Daechi-dong	KORAD Co., Ltd.	'00.08 ~ '01.08
Topdong Elementary School, Seoul	Seoul Regional Public Procurement Service	'00.08 ~ '02.08
Mywill I, Gyesan-dong, Incheon	Shinwon C&T Co., Ltd.	'01.08 ~ '02.09
Mediana Center, Bupyeong	Global Land E&T Co., Ltd.	'01.09 ~ '02.12
Mywill II, Gyesan-dong Incheon	Shinwon C&T Co., Ltd.	'01.10 ~ '02.12
Sangdong Mywill, Bucheon	Hyomyung Corp.	'01.11 ~ '03.12
Hwajung Mywill	MYO Industry	'01.12 ~ '03.11
Joongdong Mywill II	Hyunjin E&C Co., Ltd.	'02.03 ~ '04.08
Ansan Mywill	Gold Industrial Development Co., Ltd.	'02.04 ~ '04.01
Mywill, Dongam Station	Sungju Industrial Development Co., Ltd.	'02.05 ~ '04.02
Mywill, Bupyeong	Hyomyung Corp.	'02.05 ~ '04.08
Cheonan City Hall building	Cheonan City Hall	'02.05 ~ '05.08
Central Park, Jungdong	Sungju Industrial Development Co., Ltd.	'02.06 ~ '04.06
Ulsan Gallery Zone	Ulsan Co., Ltd.	'02.07 ~ '05.01
Mywill, Deungchon Station	Nestop Co., Ltd.	'02.08 ~ '03.03
Cresytower III, Guidong	Cresyn Development Co., Ltd.	'02.11 ~ '04.11
Myhome, Mullae-dong	Byeoksong E&C Co., Ltd.	'02.12 ~ '04.10
Myhome Ingye-dong, Suwon	Doswisagg Co., Ltd.	'02.12 ~ '04.11
Myhome, Sangroksoo	ECPM Co., Ltd.	'03.02 ~ '04.08
Myhome Sweetly, Mullae Station	Woojeong Housing Development Co., Ltd.	'03.03 ~ '04.12
Myhome Sangam I, II	Landone Co., Ltd. Et al.	'03.03 ~ '05.07
Haeundae Pylon	Myoungi Development	'03.06 ~ '05.10
Ilsan, Joongdong Haeundae	Purpose D&C Co., Ltd.	'03.06 ~ '06.11
Ilsan I, II, Yanggyeong-dong	Byeoksong E&C Co., Ltd. Et al.	'03.07 ~ '05.07
Bupyeong Office, Korea Life Insurance	Korea Life Insurance Co., Ltd.	'03.08 ~ '05.05
Ilsan, Baekseok-dong	Sungju Industrial Development Co., Ltd.	'03.12 ~ '05.09
Pyeongcheon Office, Korea Life Insurance	Korea Life Insurance Co., Ltd. (Hanwha Life Insurance Co., Ltd.)	'04.02 ~ '05.11
KGIT Center II, III	Korea Industrial-Academic Cooperation Complex Co., Ltd.	'04.04 ~ '07.08
Ilsan, Nonhyun-dong	People and Future D&C Co., Ltd.	'04.06 ~ '06.05
KGIT Center I	Hanbok Industrial-Academic Cooperation Complex Co., Ltd.	'04.11 ~ '07.05
Bundang AUDI Building	Own project	'04.12 ~ '05.04
Ilsan, Joongdong Bucheon	Seoji Construction Co., Ltd.	'05.01 ~ '08.03
Herald Media Building Refurbishment	Myeongdong Tower Co., Ltd.	'05.04 ~ '05.11
CCK 2005	CCK	'05.08 ~ '06.03
Space Communication Research Laboratory	Unit 5163	'05.08 ~ '06.12
Incheon Firefighting and Disaster Control Center	Incheon Regional Public Procurement Service	'05.11 ~ '07.07
Shinseodong Office, Korea Life Insurance	Korea Life Insurance Co., Ltd. (Hanwha Life Insurance Co., Ltd.)	'06.09 ~ '08.03
Bucheon Joong-dong Office, Korea Life Insurance	Korea Life Insurance Co., Ltd. (Hanwha Life Insurance Co., Ltd.)	'06.10 ~ '09.02
GM Cheongra Technical Research Laboratory	GM Daewoo Auto and Technology Co., Ltd.	'06.11 ~ '07.12
Trading Culture Center	COEX	'07.10 ~ '09.04
International Education Center	Jeju National University	'07.11 ~ '08.11
Staff Welfare Facility	Jeju National University	'07.12 ~ '08.12
Expansion of Busan Office	Korea Steel Co., Ltd.	'08.06 ~ '08.10
Renewal of Atlantic Hall	COEX	'08.07 ~ '08.10
Songdo Campus Phase 1, Yonsei University	Songdo Global Compound Complex Development Co., Ltd.	'09.02 ~ '10.01
General Building, Aju University	Aju University	'09.07 ~ '11.03
Songdo Global University Sector 1	Songdo Global College Campus Co., Ltd.	'09.07 ~ '11.08
Office Building, Samsungdong	PETROS Co., Ltd.	'09.12 ~ '11.12
Expansion and remodeling of Sejong Center of Performing Arts	Sejong Center for the Performing Arts	'10.03 ~ '12.03
Songdo I-Tower	Incheon FEZ	'10.07 ~ '12.09
Hospital Building, Daegu	Pureun Hospital	'11.10 ~ '13.05
Multi-unit residential facilities	Hongdeoksoo Tech Co., Ltd.	'11.03 ~ '11.10
Geochang Dormitory	Hongdeoksoo Tech Co., Ltd.	'11.07 ~ '12.02
Haman Employee Residence	KISWIRE Co., Ltd.	'12.04 ~ '13.02
Haman Dormitory	KISWIRE Co., Ltd.	'12.04 ~ '13.03
PAULI Shop interior	JL Global Korea Co., Ltd.	'13.01 ~ '13.02
Jempulpo Smart Town	IDTC	'13.01 ~ '14.04
Brioché Dorée Shop Interior	JL Global Korea Co., Ltd.	'13.08 ~ '13.09
KISWIRE Center, Busan	KISWIRE Co., Ltd.	'14.10 ~ '16.03
Gyeongju Korean Projectile Test Laboratory	KARI	'14.12 ~ '16.06
Yonghyun Haikik No. 3 Elementary School	Incheon Metropolitan City Office of Education	'15.08 ~ '16.07
Pyeongchang Research Center, SNU	SNU Green Bio Science Research Institute	'15.12 ~ '17.09
Renovation of Daewoo Foundation Building	Daewoo Foundation	'16.10 ~ '17.06
Chongju Bangsoo Elementary School	Chungcheongbuk-do Office of Education	'17.10 ~ in progress
Incheon Baekhak Elementary School Expansion	Incheon City Southern Education Support Agency	'17.12 ~ in progress
Hwaseong Dongtan Elementary School and Middle School	Korea Land & Housing Corporation	'17.12 ~ in progress

Housing Projects References

Project name	Client	project period
Ssangmoon Villa	Mirae Villa Co., Ltd.	'97.08 ~ '99.02
Gimpo Gochon Apartment	Seowon E&C Co., Ltd.	'98.06 ~ '00.11
Daegjeon Nobeun Apartment	Daewoo E&C Co., Ltd.	'98.11 ~ '00.11
Busan Dongrae Apartment	Daewoo International Co., Ltd. (Posco Daewoo Corporation)	'99.06 ~ '02.02
Bupyeong Galsan Apartment	Daewoo Motor Company	'99.09 ~ '01.11
Incheon Songhyun Korea National Housing Corporation Apartment	Korea National Housing Corporation	'99.10 ~ '02.10
Incheon Younggong Korea National Housing Corporation Apartment	Korea National Housing Corporation	'99.11 ~ '01.06
Eulwang Daewoo Apartment	Eulwang Housing Cooperative	'99.11 ~ '03.08
Bucheon Sangdong Apartment	Own project	'00.03 ~ '02.08
Busan Hwaryeong Apartment	Own projects	'00.04 ~ '02.10
Gimpo Siwoo Apartment	Gimpo Reconstruction Cooperative	'00.09 ~ '02.11
Ssangmoonong Apartment	Ssangmoonong Reconstruction Cooperative	'02.04 ~ '04.03
Pohang Hwanho Korea National Housing Corporation Apartment	Korea National Housing Corporation	'02.08 ~ '05.05
Incheon Samsan Korea National Housing Corporation Apartment	Korea National Housing Corporation	'02.10 ~ '05.05
Namcheon-dong Portuna	Jerim E&C Co., Ltd.	'03.01 ~ '04.12
Ilsan, Yoojeon-dong	Style Development Co., Ltd.	'03.02 ~ '05.04
Ilsan I, II, Yongsan	Hyomoontech Co., Ltd., et al.	'03.03 ~ '05.11
Ilsan, Pyeongtaek	ENC Co., Ltd.	'03.05 ~ '05.03
Cheongju Shinyoung Korea National Housing Corporation Apartment	Korea National Housing Corporation	'03.08 ~ '05.09
Ilsan, Incheon, Daegu	Realty Bank Co., Ltd.	'03.11 ~ '05.12
Ilsan, Daejeon	Humanless Co., Ltd.	'03.12 ~ '05.12
Ilsan, Gyeongju	Glora Builder Co., Ltd.	'03.12 ~ '08.03
Ilsan, Ilsan	Mani Industry Co., Ltd.	'03.12 ~ '08.06
Ilsan III, Yongsan	Hygin Tech Co., Ltd.	'03.12 ~ '07.09
Ilsan, Ochang, Cheongwon	Builders CND Co., Ltd.	'04.01 ~ '06.02
Ilsan, Sungnae-dong	Lanthe Co., Ltd.	'04.02 ~ '05.12
Ilsan, Songdo	Joehun IND Co., Ltd.	'04.03 ~ '06.04
Incheon Dongyang Korea National Housing Corporation Apartment	Korea National Housing Corporation	'04.04 ~ '06.04
Incheon Nonhyun Korea National Housing Corporation Apartment	Korea National Housing Corporation	'04.05 ~ '06.07
Ilsan, Gaumgok-dong	DNC Holdings Co., Ltd.	'04.06 ~ '06.07
Ilsan, Moonhyun-dong	Korea Land Trust Co., Ltd.	'04.06 ~ '07.04
Ilsan IV, Yongsan	Hyomoon Tech Co., Ltd.	'04.10 ~ '06.05
Ilsan, Shinjeong-dong, Ulsan	Daesong Co., Ltd.	'04.12 ~ '07.04
Ilsan, Chooncheon Toegae	The Good Co., Ltd.	'04.12 ~ '07.07
Ilsan, Ulsan	Hanin E&C Co., Ltd.	'05.01 ~ '06.07
Ilsan, Danye-dong, Wonyu	Cheongnyong E&C Co., Ltd.	'05.03 ~ '07.08
Ilsan, Samgye-dong	One Metro Co., Ltd.	'05.05 ~ '07.10
Ilsan Haeundae Exordium	Own project	'05.11 ~ '09.06
Ilsan Taehwang Exordium	LC General Construction Co., Ltd.	'06.02 ~ '09.09
Incheon Nonhyun 2BL Korea National Housing Corporation Apartment	Korea National Housing Corporation	'05.12 ~ '08.05
Ilsan, Namyangju	Jidan Holdings Co., Ltd.	'07.06 ~ '09.08
Ilsan, Yeosu	Myeonghillsangju Co., Ltd.	'07.01 ~ '09.08
Incheon Dongsan Korea National Housing Corporation Apartment	Korea National Housing Corporation	'07.09 ~ '10.10
Ilsan, Hoesung-dong, Gangwon	Saewoolim Co., Ltd.	'07.10 ~ '09.08
Ilsan, Songhyun, Andong	Cheongwoo Development Co., Ltd.	'07.12 ~ '09.08
Ilsan, Wolbae, Daegu	Jeonin General Development Co., Ltd.	'07.12 ~ '09.10
Ilsan, Seoksu, Anyang	Siwoe E&C Co., Ltd.	'07.12 ~ '10.01
Ilsan, Kyungju Choonghyo	Sedae E&C Co., Ltd.	'08.01 ~ '10.03
Ilsan, Cheowon, Daejeon	Land & Space Co., Ltd.	'08.01 ~ '10.03
Ilsan, Doojeong Station, Cheonan	Seji CNC Co., Ltd. + Wedus CND Co., Ltd.	'08.05 ~ '10.10
Ilsan, Cheongbuk, Pyeongtaek	Sejong IND Co., Ltd.	'08.07 ~ '10.07
Gimpo Bugok Korea National Housing Corporation Apartment	Construction Aid Cooperative Seoul Reimbursement Center	'08.12 ~ '09.11
Haeongsok Cheomseul Korea National Housing Corporation Apartment	Korea National Housing Corporation	'09.03 ~ '11.09
Songdo Global Campus Apartment	Daewoo E&C Co., Ltd.	'09.10 ~ '12.02
Gwangyang Joongma Apartment	Woorim E&C Co., Ltd.	'12.05 ~ '12.09
Siyeon Technovalley Lian	STID Co., Ltd.	'12.09 ~ '15.09
Ilsan, Samcheon, Jeonju	Jeonju Samcheon Reconstruction Cooperative	'13.01 ~ '14.10
Jinhae Naval Officers' Residence	City of Changwon	'13.06 ~ '15.08
Asan Tangjeong Apartment	LH	'13.06 ~ '15.10
Ilsan, Cheomdan, Gwangju	Ilsan Cheomdan Housing Cooperative	'14.11 ~ '17.09
Jangheung Lohas Town A block	Landovers Korea Co., Ltd.	'15.01 ~ '15.11
Ilsan, Namjangri, Hongsung	Koram Asset Trust Co., Ltd.	'15.04 ~ '17.05
Sector 16, Woorjeong Apt., Paju	NH No.3 Public Leasing Development Trustee Managed Real-Estate Investment Company	'15.04 ~ '17.11
Ilsan, Jinnyang, Kyongsan	Kyongsan Regional Housing Cooperative	'15.05 ~ '17.10
Ilsan, Daeso, Eumsung	Eumsung Daeso Regional Housing Cooperative	'15.12 ~ in progress
Ilsan, Dongdaegu	Seonjin Shinam Sector House Reconstruction and Improvement Project	'15.12 ~ in progress
Ilsan The Seosan	D-cube Development Co., Ltd	'16.08 ~ in progress
Ilsan Cube	Yoolm D&C Co., Ltd.	'16.09 ~ in progress
Ilsan Wonyu Taegang	Taegang Housing Cooperative	'16.12 ~ in progress
Ilsan Dodeurim Gheung Station	Daedo Industrial Development	'17.06 ~ in progress
Ilsan Dodeurim Osan University Station	Daedo Industrial Development	'17.11 ~ in progress
Hanam Gamvil Apartments Lot No. 3	Korea Land & Housing Corporation	'17.08 ~ in progress

Overseas References

Project name	Client	Project period
Kunshan Jian	Kunshan Jian Fangdichan Development Co., Ltd.	'05.10 ~ '10.10
Hanzou Compound BLDG. Phase 1	CORALIS VIETNAM	'07.10 ~ '08.10
Suzhou Times Square	Suzhou Esagye Hanyoung/Hwayoung Bangsan Management Co., Ltd.	'08.01 ~ '09.08
Sanyonghu, Daqingshi	Daqing Sango Jidock Jisan Co., Ltd.	'08.03 ~ '10.08
Kiswire Phase 1, Hochaminh	Kiswire Vietnam	08.03 ~ '09.02
Banghazai Infrastructure PJ	Libya HB	'09.11 ~ '13.04
Malaysia Kiswire R&D Center	Kiswire Malaysia	'09.11 ~ '10.08
Mers El Kebir Port Dredging Work	Ministry of Defense, Algeria	'13.03 ~ ongoing



Food Service & Culture



YEUIDO STATION STORE

IREX BUILDING 1F, 108, UISADANG-DAERO, YEONGDEUNGPO-GU, SEOUL
TEL: +82-2-2070-3000



DAEWOO FOUNDATION SEOUL-RO STORE

1F SUWON BRANCH, LOTTE MALL, 134, SEHWA-RO, GWONSEON-GU, SUWON-SI, GYEONGGI-DO
TEL: +82-2-318-5884



LOTTE MALL SUWON BRANCH SHOP

1F SUWON BRANCH, LOTTE MALL, 134, SEHWA-RO, GWONSEON-GU, SUWON-SI, GYEONGGI-DO
TEL: +82-31-6066-1603)3



GRAN SEOUL BRANCH SHOP

1ST BASEMENT, GRAN SEOUL, 33, JONGRO, JONGNO-GU, SEOUL
TEL: +82-2-2158-7884



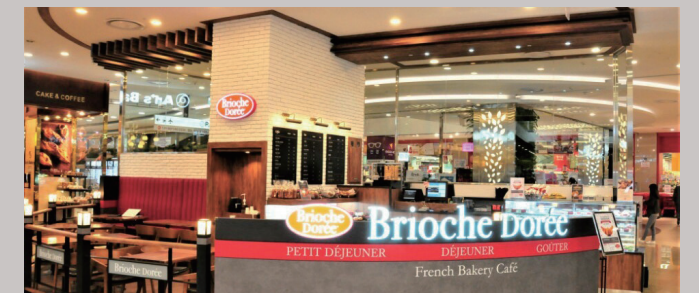
SANGAM MBC MALL STORE

MBC MALL 1F, 267, SEONGAM-RO, MAPO-GU, SEOUL
TEL: +82-2-302-0580



SHINSAEGAE CENTUM CITY BRANCH SHOP

1ST BASEMENT, SHINSAEGAE DEPARTMENT STORE, 35 CENTUM NAM-DAERO, HAEUNDAE-GU, BUSAN
TEL: +82-51-745-2150



LOTTE MALL GIMPO BRANCH SHOP

77, HANEUL-GIL, GANGSEO-GU, SEOUL LOTTE MALL GIMPO AIRPORT BRANCH GF
TEL: +82-2-6116-5954



APGUJEONG STATION STORE

I.S.A. BUILDING 1F, 51, APGUJEONG-RO 30-GIL, GANGNAM-GU, SEOUL
TEL: +82-2-517-1113



HANAM STARFIELD BRANCH SHOP

750 MISARHARA, HANAM-SI, GYEONGGI-DO (STARFIELD HANAM, SHINSEGAE DEPARTMENT STORE) B1
TEL: +82-31-8072-1317



GWANGJU SANGMU DISTRICT STORE (1ST AFFILIATED STORE)

GWANGJU METROPOLITAN CITY SEO-GU CITY HALL 81 DAEA BUILDING 1F
TEL: +82-62-382-0036



GEOJE NORWEGIAN FOREST STORE (AFFILIATED)

103-217, SANGGA-DONG 7, JANGPYEONG 1-RO, GEOJE-SI, GYEONGSANGNAM-DO (YURIM NORWEGIAN FOREST)
TEL: +82-55-634-2177

Social Responsibilities Activities of Daewoo Development Co., Ltd. Engineering and Construction

Daewoo Development Co., Ltd. Engineering and Construction is opening up a world that is full of hope through its social responsibility activities. The company has also contributed to the community by building the seaside road in Songdo, which eased the heavy traffic conditions faced by the local community and has made the environment more comfortable by commencing work in the Incheon Free Economic Zone and Yeonsu-gu.

Also, we donate rice for our needy neighbors, hold festivals for elderly persons in celebration of Parents' Day, and organize other events such as the Employee's Market Place to Help Rural Communities, Sharing Love in Celebration of Chooseok, the Community Environment Preservation Program to create a better environment for local communities, Happy Trucks with Love for the Spring, iaan Love House, iaan lunch box of love, blood donation service of love, briquette sharing service of love, etc. With feelings of respect for the members of local communities and with a spirit of volunteering we seek to achieve the common good of the public. Daewoo Development Co., Ltd. Engineering and Construction is making the world a better place to live in.

